

OCTOBER 2021

# UPDATE LAYHER

## ALL EYES FIRMLY ON THE FUTURE

**As we all look to emerge from the difficulties of the last two years, at Layher, we have one main subject in mind. The future.**

*"We realised very early on that there would be a list of key factors that our customers would need us to focus upon during the pandemic," says Sean Pike, UK MD. "Now we can see the benefits of this understanding and are happy to report a business that is optimistic for our future, and yours."*

Maintaining close links with our customers has proven to be vital. By developing active, strategic partnerships we have been able to build not only on the range and support services upon which our and your success is based, but to bring even more benefits to the table. As can be seen from this issue of Update Layher, there is a long list of examples that demonstrate this approach in practice.

*"From ensuring continuity of supply to demonstrating ongoing innovation and investment - as the following pages highlight - we have all been able to address the challenges in recent months," adds Sean Pike.*

*"The time for looking backwards is literally behind us - we can now all fix our focus clearly on the future."*

*"Layher . . . is optimistic about our future, and yours."*

Sean Pike, Managing Director, Layher Ltd



### IN THIS ISSUE

- 2** Layher reaches further – and faster – across the Forth in Scotland
- 6** Greater safety, improved efficiency, exciting innovations – yet more possibilities from Layher
- 12** Housebuilding – profiling Layher's system advantages of speed and adaptability
- 14** Dependable, safe and experienced – outlining Layher's partnership with the rail industry

Layher® 

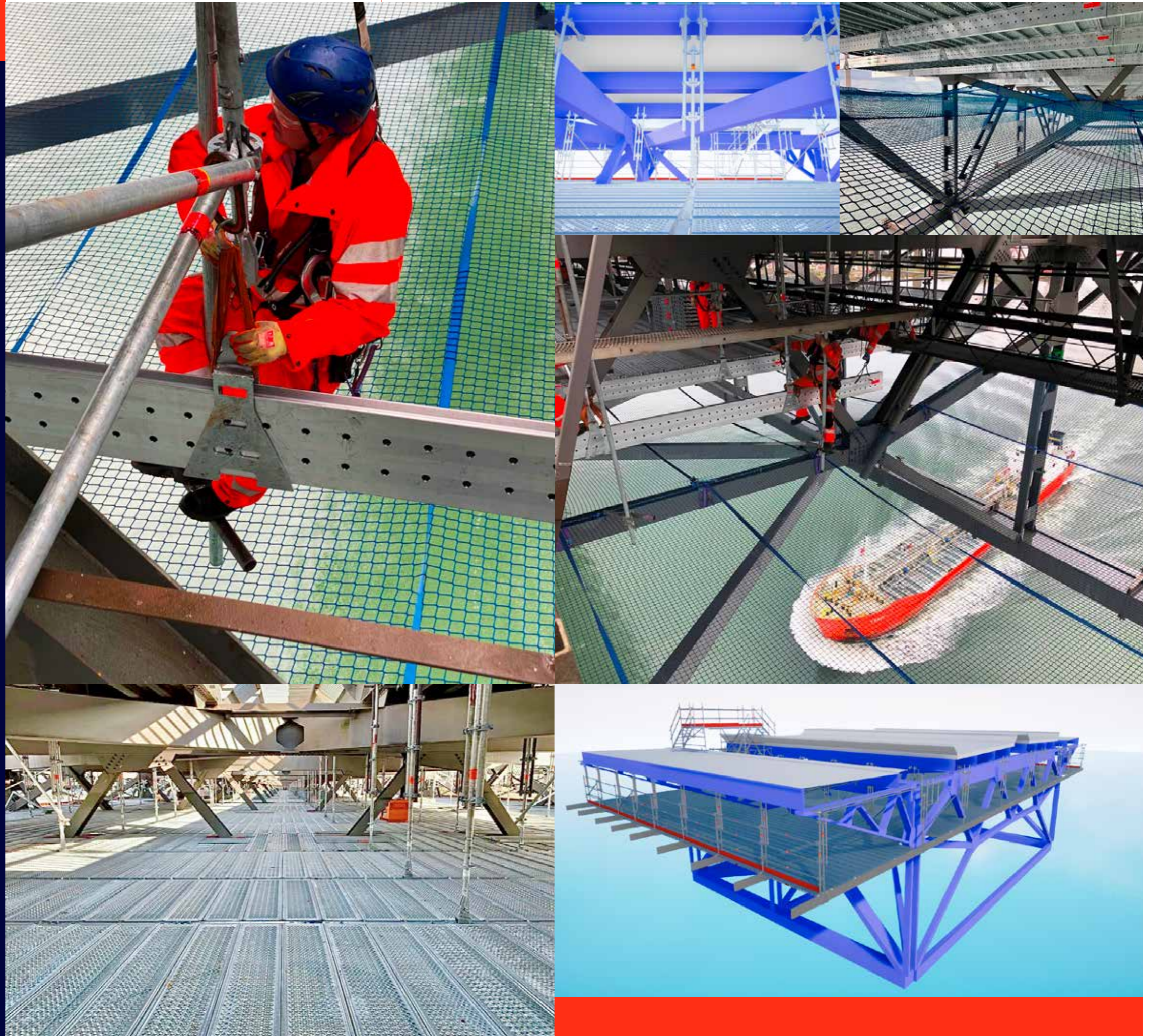
More Possibilities. The Scaffolding System.

# FLEXBEAM BRINGS CLEAR ADVANTAGES TO ICONIC SCOTTISH STRUCTURE

The Layher FlexBeam is helping to create an extensive work area underneath the road deck of the Forth Road Bridge – which, at more than 2.5 km in length, has connected North and South Queensferry since 1964 – with clear advantages in terms of efficiency and time savings.

Ross Brown is Director of I-Scaff Access Solutions Ltd. who have installed the Layher system for main contractor Millar Callaghan Engineering Services Ltd. – working for BEAR Scotland, appointed principal contractor by bridge owners, Transport Scotland. He highlights key elements of the access project.

*“The underside of the bridge deck features a series of parallel walkways, totalling some 10 km in length, which were installed in the 1980’s to provide Suspended Span Underdeck Access (SSUDA) to help facilitate engineering, maintenance and inspection activities,” he says. “These gantries are now undergoing their own programme of maintenance which has called for a full width suspended scaffold to be installed as a means of access. We have been brought in to meet this need on the sixth phase – some 120 metres in length across the full 36 metres width of the bridge – and our use of the Layher FlexBeam has brought major advantages to the work.”*





Importantly, the Layher system has required far less equipment than had been experienced in earlier phases where tube and fitting scaffold was used.

*"The walkways are being removed for offsite refurbishment before being returned to and refitted on the bridge and, with some sections measuring up to 9 metres in length, the handling equipment is gaining significantly from the relatively unobstructed platform,"* continues Ross Brown. He says that the standards from which the temporary decking is suspended are located at an average of 4.5 metre intervals rather than the 1.6 metres typically required by tube and fitting. *"Overall, we have been able to install 80 square metres of suspended decking per day on average – twice as fast as was originally the case."*

The Layher installation features standards linked in clusters of three using wedge-head swivel couplers which, in turn, are clamped to, and suspended from, the bridge's own steelwork using girder couplers. These standards then drop down to connect directly to the Layher FlexBeams installed at up to 5.5 metre intervals, and onto which Layher's Allround Lightweight steel decking is then located. Dropped object netting has also been located under the full working area by another Millar Callaghan Engineering Services subcontractor to protect the waterway below.

Layher Scotland's Technical Manager, Kenneth Redman, points out that by using the Layher Scaffolding Information Modelling (SIM®) software, a clear visual demonstration of the advantages of the FlexBeam system was available to the client in VR format, directly from the company's LayPLAN CAD design model.

*"The lightweight material has also helped with manual handling procedures, while the greatly reduced number of components has not only played a key role in optimising installation efficiency, it has also made a significant contribution to minimising transport and storage needs,"* says Kenneth Redman.

To date, the largest suspended scaffold installed in the UK to use Layher's FlexBeam, the Forth Road Bridge also represents I-Scaff's first application of the equipment, with the contractor undertaking familiarisation training nearby at the Livingston facility. *"We are delighted to be able to demonstrate to our customer that the benefits and savings on paper were recreated, and sometimes exceeded, when brought to life,"* adds Ross Brown.



# NEW AGS SYSTEM MEANS **SAFE, FAST AND VERSATILE SITE OPPORTUNITIES**



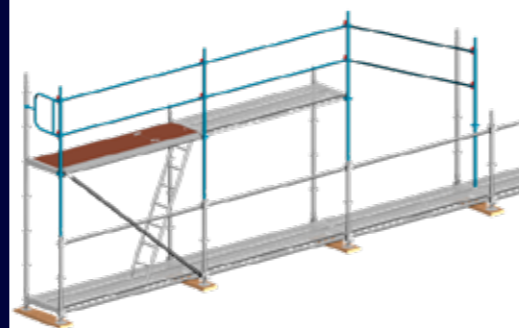
**Designed to simplify and enhance façade scaffold installation, the new Layher AGS system features a post and guardrail design which is completely independent but can also interface directly with well-established Layher Allround. The same key benefits of safety, speed and versatility are very much in focus.**

*“The AGS system comprises a 2 m standard with an integrated Layher rosette and two innovative quick-release levers for fitment of the standards from the lift below,” explains Sean Pike, UK MD. “Once positioned, the assembly is elevated by hand from the secure lower level. Importantly, the quick-release levers are coloured red to enable a rapid*

*visual check of an entire structure to be made from ground level.”*

As with so many of recent Layher developments, the AGS system uses lightweight materials, which not only aid the manual handling process but also, because of its dimensions, help to optimise transportation and storage. Once installed, extensions can be readily added, regardless of the existing structure’s layout.

*“We have always placed great emphasis on the role played by continuous equipment innovation – much of which has been inspired by customer feedback,” concludes Sean Pike, “and the new AGS system is centre stage.”*



**RECENTLY SHORTLISTED  
IN THE NASC PRODUCT  
INNOVATION OF THE YEAR  
AWARD 2021**

## AGS benefits:

- Standards provide the same loading capacity as their Allround stablemates.
- Guardrail lengths of between 1.57 metres and 3.07 metres are available.
- Installations can match the full range of Layher’s common bay widths.
- Advancing side protection can also be incorporated.
- Structures can feature both external and internal protection throughout.
- Bracing components such as Allround Ledgers or diagonals as well as U-shaped transoms can be fitted.
- System independence is enhanced enabling the user to react flexibly to site needs.
- Other Allround components such as brackets and stairs can become part of an AGS installation.

# BRICKLAYING OPERATIONS **GAIN FROM LAYHER INNOVATION**

A further enhancement of bricklaying operations can now be realised with the new Layher Brickguard. Simply installed by clipping over the top ledger, the Brickguard fits flush to the face via an innovative design that bypasses the Allround rosette.

*“The design creates a 500 mm overhanging section which complements Layher system scaffolding bays,” explains UK MD Sean Pike, “while also fitting over our toe-boards.”*

Manufactured from tough, durable polypropylene, the reusable Brickguard has been tested to BS EN 12811-1 and is stackable to 150 units.

*“Each Brickguard measures 1 m x 9.45 m and weighs just 2 kg – making handling and installation simple, fast and efficient,” concludes Sean Pike.*



# SIMPLIFYING BRICKWORK INSTALLATION



**Saving time and enhancing safety – the new Layher Window Bracket Extension is the latest example of the company’s commitment to innovation.**

*“The design bridges the gap between external and internal scaffolds and is readily installed through simple blue screw fixing,” says UK MD Sean Pike.*

Fitting the Layher 0.32 mm deck width, the benefits of the new extension will be immediately recognised by everyone involved in brickwork construction – a further example of Layher’s design capability helping to optimise on site operations.

# HELPING FAMOUS ACADEMIC FACILITY WIN **NEW LEASE OF LIFE**

The iconic Russell Building in Hertfordshire which, since 1919, has provided a dynamic research hub, particularly in the field of agricultural technology, has now benefited from MR Scaffolding Services Ltd's installation expertise and Layher's leading edge scaffolding systems during a major refurbishment project.

"Full access to the external envelope of the building has facilitated comprehensive fabric repairs and renovation," says Area Sales Manager, Clive Rowe. "This is centred on the Layher Allround lightweight generation scaffolding system, steel decks and toe boards to deliver full access on three lifts." The clear walkways that are created optimise the movement of both workforce and materials along all sides – some eight connected façades in total.

Appointed by principal contractor, ITC Concepts Ltd., MR Scaffolding Services point to key gains offered by the Layher system compared to alternatives such as tube and fitting scaffold. Both installation training and supervision at site have been provided – just part of Layher's commitment to working in strategic partnership with its customers.

"Ease of transportation, site storage and handling are key factors which enable the system to be installed quickly and safely – a factor that is enhanced further by Allround's in-built rosette connection system that helps to minimise the number of components required," comments Terry Wescott, MR Scaffolding Services' Contracts Manager. "The wide bay design also simplifies the process of bringing goods and equipment to each working lift via a materials hoist."

The scaffold design has also maintained entrances to and exits from the building which – after being unoccupied since 2014 – has remained active and open throughout the refurbishment project.

Jointly funded by the Hertfordshire Local Enterprise Partnership and the Hertfordshire Innovation Quarter, it is anticipated that the refurbished Russell Building – a key facility on the Rothamsted Research Campus – will become home to some 22 enterprises and staff numbering 118 personnel.



# NEW RESIDENTIAL APARTMENT BLOCK CONSTRUCTION **GAINS FROM LAYHER SCAFFOLDING**

The benefits of Layher modular scaffolding during the construction of new residential facilities have been clearly demonstrated near Cobham in Surrey where main contractor, Keady Construction Ltd. has appointed scaffolding contractor, MR Scaffolding Services Ltd. to provide multi-level façade access as the build has progressed.

"The Pegasus Cobham Bowers development is providing one- and two-bedroom apartments for the over-60's and is centred on two separate structures, located at right angles to each other, with roof designs that feature a total of 12 apex structures," says Antony Powell, Contracts Manager at MR Scaffolding Services. "The scaffolding has been designed to provide full perimeter trades

access to include table-lifts at the apex locations."

Based on a wide bay construction, with no need for ledger-bracing, each of the three fully decked lifts and apex scaffolds provide extremely clear walkways which optimise the movement of both manpower and materials.

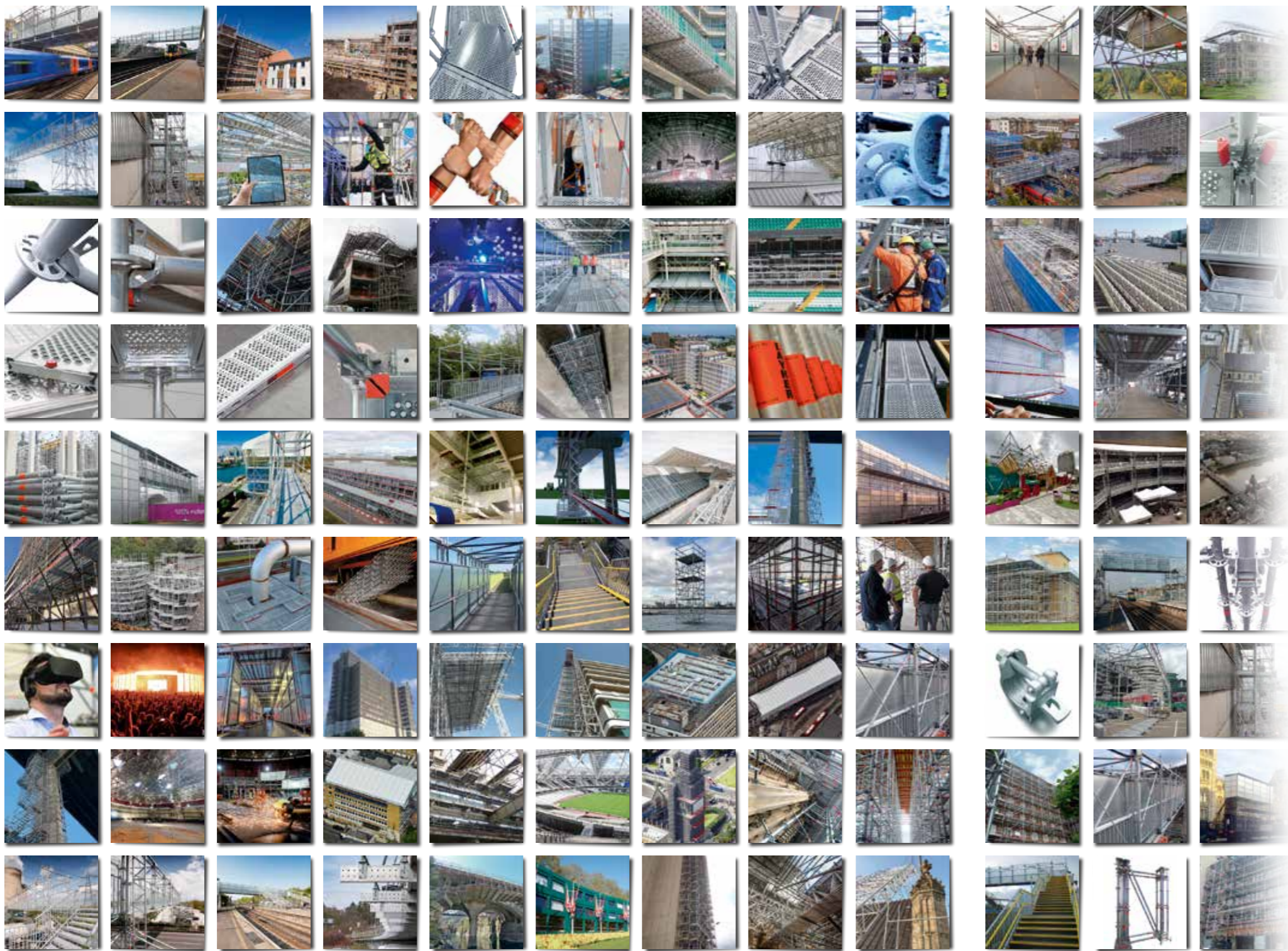
"This is important for the various construction trades, particularly during the installation of full height windows which are a feature of the development," continues Antony Powell.

"Our engineer Paul Hurst has worked closely with the customer on the installation design – just one of the range of strategic partnership support services that we provide," says Sean Pike, Layher's UK MD.



## KEY FEATURES

- Full 1.09 m wide scaffold with 730 mm wide console brackets and console extensions provide an additional 320 mm wide surface – relocated as the work at each level moves on.
- Four Layher staircases – supplemented by ladder access bays – provide easy manpower access to all levels.
- Progressive loading bays for material location play a key role in maximising construction efficiency.



For more than  
75 years,  
Layher has focused  
on **innovation**  
not imitation.

It's why we remain  
the past, present  
and future of  
system scaffolding.



The *past, present*  
and *future* of  
system scaffolding

Layher UK [info@layher.co.uk](mailto:info@layher.co.uk) | [www.layher.co.uk](http://www.layher.co.uk)



Layher® 

More Possibilities. The Scaffolding System.





# LAYHER BRINGS HOME CLEAR-CUT HOUSEBUILDING BENEFITS



**The widespread commitment to new housebuilding – via developments of all sizes and types – places all elements of construction in the spotlight. At Layher, our wide choice of innovative components and extensive experience helps contractors deliver impressive results.**

*“Housebuilding needs can vary enormously,” says Sean Pike, UK MD. “From a residential block, where the prime requirement is to provide façade access, to complex individual designs – safe and efficient access for the wide range of trades*

*involved must be provided. At Layher, we have a list of examples that demonstrate our capability in this highly specialist field.”*

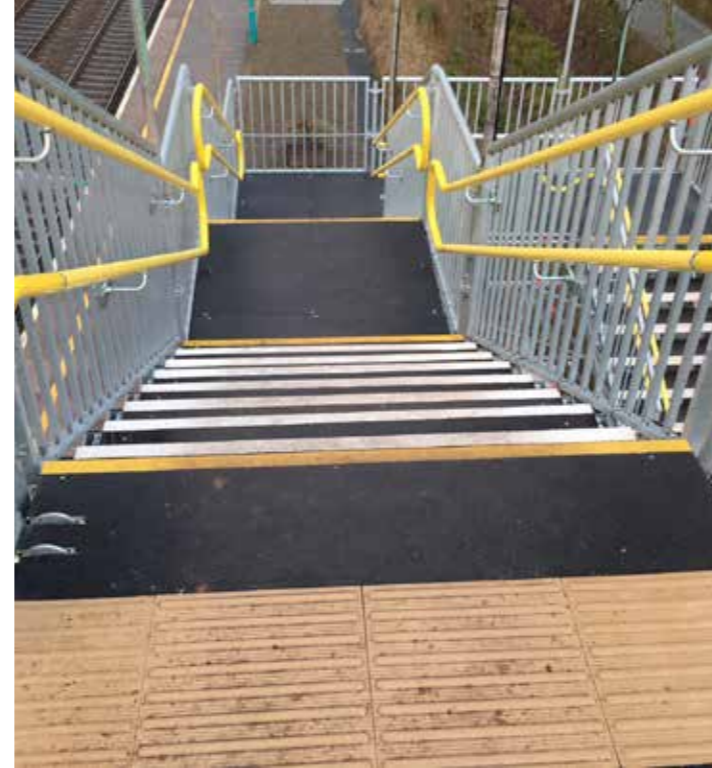
Crucially, the benefits of the Layher scaffolding, access and weather protection systems are as relevant to conventional brickwork construction as they are to new modern building methods.

*“Often the use of blockwork or timber, for example, means houses are erected quickly so the scaffolding has to be able to keep pace,” adds Sean Pike. “Equally, conventional architectural features such as*

*balconies, or the use of materials and components that gain from the clear, wide access that our systems create, can often underline Layher’s extensive and impressive performance record in this context.”*

As housebuilding continues to thrive in the optimistic environment post pandemic, one can foresee the industry remaining a major growth sector. By working in strategic partnerships with our scaffolding contractor customers, we can all benefit from these opportunities and deliver solutions that can only build on our joint success.





## RAIL RELIABILITY:

**From new construction to ongoing maintenance, the rail industry is a highly specialist sector. The paramount need to ensure safe and efficient use of all equipment and methods used extends both to the workforce and the public alike – calling for scaffolding access and protection systems of the highest quality.**

*"From our choice of scaffolding designs to purpose-developed equipment, we have always been fully aware of rail users' needs and work closely with contractors and operating companies to deliver optimum results,"* says Sean Pike, UK MD.

The Layher range of bridging systems is a prime example. A wide range of spans can be achieved,

## LAYHER OFFERS A PROVEN TRACK-RECORD

typically for installation across active lines, to provide temporary access between platforms. Supplemented by stair systems with DDR-compliant handrails and the versatile Layher Protect panel design – used, for example, to create effective screens between bridging structures and the rail lines below – mean almost all rail installations' access needs can be met.

*"We are fully aware that possession times are key during rail works and can often be linked to penalty clauses arising from project overruns,"* adds Sean Pike. *"The installation speed and simplicity of our designs have been proven to make a major contribution in this regard, particularly as many of our structures can be assembled trackside or even offsite for craning into position during closure periods."*

With storage and transportation benefits also to the fore, the gains arising from the use of Layher equipment throughout the rail sector are clear-cut – and are well set to enable our work with contractors in the field to stay fully on track.





## NEW APPOINTMENT STRENGTHENS SCOTTISH DEPOT

We are delighted to have strengthened our structure in Scotland with a new key appointment at the Livingston premises. Eamonn Ryan (pictured above), who joined Layher in 2018, has now become the company's Area Sales Manager in Scotland and brings extensive industry experience to the role.

*"Prior to my time with Layher, I used the company's equipment extensively as a site supervisor in the event sector for some 13 years,"* he says. It was a role that saw him involved in installations of Layher equipment around the world – from the St Patrick's Day Festival to the Sydney Opera.

*"It is an experience which I believe puts me in a good position to work closely with our customers in Scotland – from project enquiry right through to scaffolding and weather protection test builds at our Livingston site,"* he continues.

Working alongside Kenneth Redman – Layher's Technical Manager for Scotland – Eamonn believes the opportunity to develop the company's presence in the country is clear-cut. *"The Scottish branch has grown steadily in recent years – which is a credit to the full team at the site. As business starts to accelerate again, we are all keen to work even more closely with our customers to help them deliver the optimum scaffolding, access and weather protection solutions for their projects,"* he concludes.

## NEW MANUFACTURING PLANT CONTINUES QUALITY AND EFFICIENCY COMMITMENT

Layher is now developing a new manufacturing facility that will enable it to increase production and enhance services to customers worldwide. Construction of the company's 'Plant #3', and associated hot-dip galvanising facility, is now well under way at the Eibensbach factory.

*"The extension is being built to state-of-the-art standards and technological advancements, including energy efficiency,"* says Sean Pike, Layher's UK MD. The latter is enhanced by floor slabs with additional insulation, special ceiling, wall insulation and triple-glazed windows.

The roof surfaces of the new plant will also pay testimony to the Layher commitment to environmental performance through grass coverings and a photovoltaic system which derives energy from and into the manufacturing plant. We are also complying with Germany's Federal Emission Control Act, which contains strict environmental protection requirements, for which our Plant #2's galvanising facility has already been awarded and commended for its emissions control measures.

*"The new 140,000 m<sup>2</sup> (14 hectares) plant signals Layher's commitment to all our customers globally, despite the challenges brought about by the pandemic and raw materials shortages,"* say Managing Shareholders, Georg Layher and Carolin Langer.

*"It is a positive step and helping to assure our clients' success by maintaining constant supply is at the forefront of this decision. We readily recognise that our customers' success drives our own and, on this basis, our joint strategic partnership and product innovation with our clients remains our sharp focus,"* they conclude.



**The past, present and future of system scaffolding**



**Layher UK**

info@layher.co.uk www.layher.co.uk

**Layher®** 

More Possibilities. The Scaffolding System.

**LinkedIn** Follow us on LinkedIn

**T** Follow us on Twitter

