

# UPDATE LAYHER

VISIT US:

Layher's 2025 Open Morning events - venues and dates to be announced.

ScaffEx 25 - Manchester,  
11 -12 September 2025

## INVESTING IN LAYHER'S TECHNICAL EXPERTISE BRINGS MEASURABLE RETURNS

Design is a critical part of your project. You can't ignore it. And, if you want to maximise your investment in Layher Allround®, you need to make sure you're getting the most comprehensive design first time round.

A poor design, or a lack of understanding of the Allround® product will lead to problems with your project. This in turn will mean that you'll have to consult Layher to get things sorted – and in the meantime, you might have delayed the project and reduced your customer's confidence in your ability to do the job at all.

So, it's important that you should get this part of your project right from the outset. And the most effective way to do that is to use Layher's expert design team, which has been providing experienced design and product support to customers for many years.

*Continued on pages 2-3*

SERVICE SUPPORT SUPPLY  
SOLUTIONS  
Our  
promise  
Your  
success

## IN THIS ISSUE

**Pages 1-3**

Design: a critical part of your project.

**Page 6-10**

Showcasing more innovative Layher solutions around the UK.

**Page 11-12**

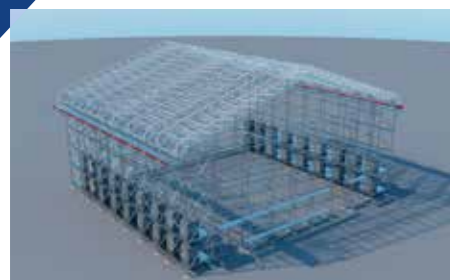
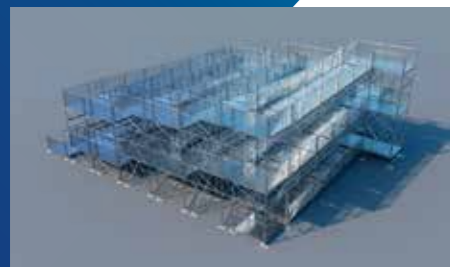
Connecting with our industry partners.

Layher 

More Possibilities. The Scaffolding System.



Continued from page 1 - Investing in Layher's technical expertise brings measurable returns



While external design companies undoubtedly always do their very best to support their clients and provide a value service to the industry, they may not always be as conversant with the product as our own designers.

The potential savings available to you by getting your initial design right is worth the cost at the design stage. Our technical design and support service offers more possibilities.

Our design team takes into account the equipment you have – both in the yard, and equipment being returned from other projects.

At Layher we will ask you to look at your stock mix, advise us via our design request form of your desired bay sizes and the materials you want to use, and then use design principles that ensure you don't have to make any unnecessary additional purchases or adjustments. We use both

CAD and VR designs – the LayPLAN Suite – which can be provided to you if needed, so you can visualise exactly how the design will look, and calculate your equipment needs precisely. Our design team of 11 experienced engineers, led by Technical Director, Anita Singh, and working from four locations across the UK, is available to all Layher customers – at cost price only, making absolute sense for contractors to use it. Here's why:

#### Unparalleled product expertise

If you're using Layher Allround® system scaffolding, or any other Layher product range, you're simply not going to find anyone else with the depth and breadth of product knowledge. This service effectively gives you a product expert that's dedicated to helping you make the best use of your equipment.

This is important, because moving into using system scaffolding is a big investment. There are efficiencies to be had, and the more help and support you can get with everything from design to logistics, the better placed you are to maximise the financial benefits more quickly. Layher offers the most comprehensive design support in the system scaffolding market.

It's important to note here that Layher Allround®, just like other original manufacturer proprietary system scaffolding, is a unique and specialised product, each with its own brand. They are categorically not generic rosette systems. Using a brand expert to do your design should enable you to get the most from your Allround® product and to meet strict health and safety requirements.

#### Turnkey service

From supporting you with an initial client enquiry to giving you on-site support, the Layher technical team offers an end-to-end service. For your business, this means you're never left on your own, wondering how to manage your system offering – there's someone to help you at every stage of every project, if you need them.

#### Can-do attitude

When you buy Layher, you become part of the Layher family. That means that nothing is too much trouble. Our engineering team is ready to help you find a solution, understand your equipment's potential and provide additional services to give you 100% confidence in running your system offering.

#### Customisation

While you'll be able to manage most projects with your standard Layher equipment, there may be times when you need solutions parts, or have a more

complex project to design. That's where being a Layher customer really proves its value. The team can design parts that are tailored to your needs – something you won't see anywhere else in the marketplace – and turn round the manufacturing process very promptly. We can also support you with complex design and materials calculation so that you can take on more ambitious projects.

What's more, using this design approach ensures consistent quality across your build – using the team's knowledge of the precise capacity of each product or component.

#### Engineering expertise

The Layher engineering team is highly qualified and experienced. Because they are dedicated to Layher's products and have an in-depth understanding of the products, you can completely rely on them to give you the support you need.

Crucially, not only do they understand the product – they understand the commercial environment that you work in – across a wide range of industries – and have a comprehensive knowledge of the differing requirements you may come across. So all designs, advice and support are focused on helping you realise the value of your investment.

Our commitment to engineering excellence isn't just about current product range – it's about innovation and continuous development, so you benefit from the drive to design and deliver the best quality products across the board. And that's not just from Layher UK – it's from the wider Layher design family.

#### Layher people

Every Layher customer is part of the Layher team. Our business has clear company values and a culture that demonstrates our commitment to personal and product development. Once you've invested in Layher, you have access to outstanding levels of support.

#### Your success is Layher's success

As a market leader in system scaffolding, we understand that our business is about far more than just selling equipment.

We focus on your growth and your commercial achievements – our core values of **Service, Support, Solutions** and **Supply** mean that we take a 360° approach to working with you from your initial enquiry onwards. That includes working with you – with no upfront charge – when you are effectively speculating on a project, such as bidding for a larger contract. We are happy to speculate with you, helping you to put the best proposition forward.



Layher really is your strategic partner – it's not just a slogan.

#### Using Layher's design service

There are some strategic design partners who use our software, but Layher's in-house engineers live and breathe the product every day, they have the experience to know what works best in a wide variety of projects, and they are the first to see how Layher's product innovations can help you to do even more.

Layher charges its design services at cost. So, you get an affordable service that's

backed by the product expertise you need in order to see a clear return on your investment.

It doesn't matter what type of project you're working on. Layher's team is highly experienced across all sectors, including:

- Oil, gas and offshore
- Construction and street works
- Events
- Rail and highways
- Housing and new-build residential
- Specialist projects

This experience means that the team has an in-depth understanding of project requirements and challenges, including speed, timelines, document control, health and safety, public interface and site support.

So, the question to scaffolding contractors using our materials – or who are thinking about investing in them – is 'why wouldn't you'? You access engineering expertise and unmatched Layher product knowledge. By doing that, you can maximise the returns on your system investment and build a secure and profitable business unit.



SERVICE SUPPORT  
SOLUTIONS SUPPLY  
Our promise  
Your success





# IBN JOINS FORCES WITH LAYHER UK IN MAJOR INVESTMENT MOVE

IBN Scaffold Access Ltd has strengthened its position in the scaffolding industry by partnering with Layher UK, following a substantial investment in the company's renowned Allround scaffolding system.

The company's Managing Director, David Brown, said *"This investment allows us to expand our services and ensure we remain competitive as the industry evolves."*

IBN's decision to adopt the Layher Allround system followed a thorough evaluation of market options. Layher emerged as the clear choice.

*"Layher's commitment to their 4S values—Service, Support, Solutions, and Supply—really stood out,"* he noted. *"They demonstrated these principles throughout our discussions and have exceeded our expectations."*

### Benefits for clients and projects

The introduction of Layher Allround has already delivered significant advantages for IBN's projects. The system's efficiency has led to notable time savings on-site, while its versatility allows the company to meet a wide range of client requirements.

Layher's ability to quickly source components, including shipping from Germany, has further enhanced IBN's operational flexibility.

*"The Layher brand is well-known and respected in the industry,"* David added. *"Our clients have confidence in the quality and innovation associated with the Allround system, which strengthens our service offering."*

### A strategic vision for the future

IBN's investment is part of a broader strategy to stay at the forefront of the scaffolding industry. While the company remains committed to traditional tube and fitting scaffolds, it recognises the growing importance of system scaffolding.

The partnership with Layher includes a focus on training, with IBN's operatives

benefiting from access to state-of-the-art facilities at Layher UK's HQ in Letchworth.

*"Our team has been extremely impressed with the training provided by Layher UK, and we're committed to ensuring all operatives are fully equipped to work with the system,"* he said.

### Strong support from Layher UK

IBN's proximity to Layher's depot in Eggborough has proven to be a key asset, providing the company with direct access to resources and technical expertise.

Layher's support extends from initial design stages to on-site assistance, ensuring smooth project execution.

*"Layher's technical knowledge, rigorous product testing, and in-house design capabilities played a major role in our decision to partner with them,"* David explained. *"They've delivered on every promise, and we look forward to a prosperous partnership."*

### Looking ahead

IBN Scaffold Access Ltd is now eager to deploy the Layher Allround system on technical and complex projects, confident in the capabilities of both the system and its team.

With plans to continue investing in Layher products and training, the company is well-positioned to capitalise on future opportunities.

SERVICE SUPPORT  
Our promise  
Your success  
SOLUTIONS SUPPLY



# FIRST LONDON-BASED USE OF LAYHER'S INNOVATIVE FLEXBEAM GANTRY

In the heart of London at One James Street, Masons Scaffolding, in collaboration with Layher UK, has successfully completed an innovative scaffolding project that is setting new benchmarks in the industry.

The ongoing renovation project, overseen by main contractor Faithdean PLC, has showcased the cutting-edge Layher Allround system and marked the first London-based use of Layher's innovative FlexBeam gantry.

The One James Street project aimed to provide access for removing precast cladding panels on all elevations of the building during its renovation. Skilled Masons scaffolders erected Layher's Allround modular scaffolding to a height of 24 metres and encircled the building's 300-metre circumference with eight lifts of scaffolding. This extensive scale was crucial for ensuring comprehensive access to all parts of the building.

The Layher Allround Scaffolding System, known for its flexibility and strength, was pivotal in achieving the project's objectives. This system allowed for efficient planning and adaptability, which was essential given the project's complexity and the high footfall area in which it was situated.

## Design and planning

Located in the busy London shopping district of Oxford Street, the project faced many unique challenges, such as managing high pedestrian footfall and coordinating with local businesses, restaurants, and residents to minimise disruptions. This necessitated Masons Scaffolding performing many tasks during night shifts to ensure public safety at all times.

The decision to utilise Layher's innovative Flex Beams for a 10KN PSN loading gantry was revolutionary. This innovative lightweight solution from Layher UK significantly reduced labour costs and marked the first time these

beams were used in a street project in London.

The approach exemplified the versatility and efficiency of the Layher Allround system, demonstrating how innovative scaffolding solutions can be employed in busy urban environments.

As standard, safety has been a top priority throughout the project. Using the Layher system over traditional scaffolding reduced noise levels, which were crucial as the upper floors (levels 4 and 5) remained operational for business purposes.

## Execution and collaboration

The project was executed in close collaboration with Layher UK's design team in Letchworth and Faithdean PLC. The tight deadlines required synchronised efforts from all trades to complete the project on time.

Notably, significant adaptations were made to facilitate the new glass facade, showcasing the flexibility and adaptability of the Layher system. The collaborative effort was a hallmark of this project, highlighting the importance of teamwork and precise coordination in large-scale scaffolding operations.

Layher's design team played a crucial role in addressing the project's unique challenges and ensuring the scaffolding was both functional and safe.

## Project outcome

The project highlighted the importance of in-house training and continuous learning, with Layher UK providing extensive support to familiarise Masons' team with their innovative products.

Freddie Holman, Contracts Director at Masons Scaffolding, remarked, "The project at One James Street was a testament to our team's dedication and the robust capabilities of the Layher system. With Layher's support, we navigated the challenges seamlessly and delivered a successful outcome that met all our client's needs."

SERVICE SUPPORT  
Our promise  
Your success  
SOLUTIONS SUPPLY



# THE ART OF SCAFFOLDING AT CITY ART GALLERY

Partnering once again with Layher UK, Skill Scaffolding harnessed the power of Layher's advanced scaffolding systems to create a robust yet elegant solution, underscoring both companies' commitment to safety, innovation, and preservation.

Southampton City Art Gallery, a neo-classical gem with Art Deco influences, has housed one of Britain's most significant art collections since 1939. Its historical significance demands an approach that preserves its architectural integrity while enabling modern upgrades, and Layher UK's expertise and products were central to meeting these high standards.

The current phase of refurbishment is funded by £2.23 million from the Museum Estate and Development Fund, provided by the Department for Culture, Media and Sport and administered by Arts Council England. This project includes the replacement of the west wing roof and installation of a new mechanical plant to better regulate the gallery's environment.

At the heart of this project was Layher's cutting-edge XL Keder roof encapsulation, which spanned 36 metres – marking one of the largest free-standing roof spans in the UK to date.

This modular roof system not only protects the gallery's structure from environmental hazards but also incorporates a rolling feature, allowing easy access to work areas without compromising on stability. Layher's unique Keder system is designed to withstand diverse environmental pressures, making it a go-to solution for complex and sensitive sites like the Southampton City Art Gallery.

Karl McLeod from Skill Scaffolding commented on the project: *"The Southampton Art Gallery project challenged us to deliver precision on a large scale. Working with Layher allowed us to design a structure that met the high standards required by a Grade II-listed building while providing the safety and accessibility needed for the gallery's ongoing preservation."*

Skill Scaffolding, as the trusted installer, worked closely with Layher UK to develop a customised design that encompassed both external and internal scaffolding. By leveraging Layher's adaptable scaffolding solutions, including 3D modelling support, the team was able to achieve a millimetre-precise fit for the gallery's unique architecture.

Layher's in-house technical team provided ongoing support, sharing their expertise to ensure the safest and most effective outcome for Skill Scaffolding and their client, Morgan Sindall, who was leading as the main contractor. McLeod added *"This project was a team effort from start to finish. Our project managers and scaffolders coordinated closely with Morgan Sindall to ensure each stage ran smoothly. It's rewarding to see our team's hard work and Layher's system come together in a project that we're truly proud of."*

Cutting-edge techniques, such as 3D scanning and lidar technology, were used to ensure every element of the scaffold structure aligned perfectly with the gallery's design.

The project demanded nothing short of excellence, and both Skill Scaffolding and Layher UK rose to the challenge, with Layher's systems and Skill's installation expertise producing a flawless and visually impressive result. This project highlights Skill Scaffolding's dedication to quality and Layher UK's innovation in scaffolding systems, exemplifying a model partnership.

Scan here to view fly-through video



SOLUTIONS SERVICE SUPPORT  
 Our promise  
 Your success  
 SUPPLY IT 7 DAYS



# LAYHER IN FOCUS AROUND THE UK

SERVICE SUPPORT  
Our promise  
Your success  
SOLUTIONS SUPPLY

Courtesy of you, our strategic partners, winning fantastic projects.



# LAYHER UK'S OPEN MORNING SERIES

Following the well-received launch in Leytonstone, Layher UK's 2024 Open Morning series continued, touching down at Eggborough, Livingston and West Bromwich depots.

Attendees praised the events for their informative presentations, meaningful discussions, networking opportunities, and the chance to engage directly with Layher's team – and more events are planned for 2025.

Sean Pike, Managing Director of Layher UK, remarked, "Our goal with these Open Mornings is to foster an environment where professionals can learn, engage, and envision the future of their businesses with our solutions. The turnout and the enthusiasm we've seen are a testament to the growing interest in Layher's approach."

## Layher's 2025 Open Morning events

Dates to be announced for this summer and autumn at our Letchworth, Eggborough and Livingston Depots.

SERVICE SUPPORT  
Our promise  
Your success  
SOLUTIONS SUPPLY





# SCAFFEX SUCCESS IN BELFAST

As a global leader in scaffolding technology, Layher UK was among the exhibitors at one of the industry's most anticipated gatherings, offering attendees insight into their cutting-edge products and solutions.

*"We were excited to join industry leaders and innovators at ScaffEx24," said Sean Pike, Managing Director of Layher UK. "This event is a fantastic opportunity for us to connect with our clients and industry partners and demonstrate how Layher systems continue to push the boundaries in scaffolding solutions."*

We look forward to being principal sponsor at ScaffEx25 in Manchester and hope to see you there!



LAYHER WERE PROUD TO HAVE HOSTED THE MARCH 2025 NASC LONDON S/E REGIONAL MEETING AT OUR LETCHWORTH HQ.



## AND FINALLY

Our SME Business Development Managers team has been strengthened by welcoming Andy Dallas who has been appointed to cover our North England area.



**The past, present and future of system scaffolding**



**Layher UK**  
[info@layher.co.uk](mailto:info@layher.co.uk)  
[www.layher.co.uk](http://www.layher.co.uk)

Follow us on LinkedIn

Follow us on Instagram

# Layher

More Possibilities. The Scaffolding System.

