

# Update

# Layher®



DECEMBER 2013

**“We thank you for your continued support and business during 2013 and wish you, your staff and family the very best of seasonal greetings and a prosperous New Year. From all at Layher Ltd.”**

## Looking forward with confidence!



**“We remain committed to production excellence and to supporting our long list of customers worldwide in what we firmly believe will be a positive future.”**

Margot Hofmann,  
International Sales Manager.

**W**e are delighted that, as the Christmas period gives on to the New Year, we can report a renewed sense of optimism throughout the markets that we serve.

Conversations at our recent Open Day in Letchworth were marked by notable confidence in the forthcoming year expressed by customers in many key areas of the building and construction sector.

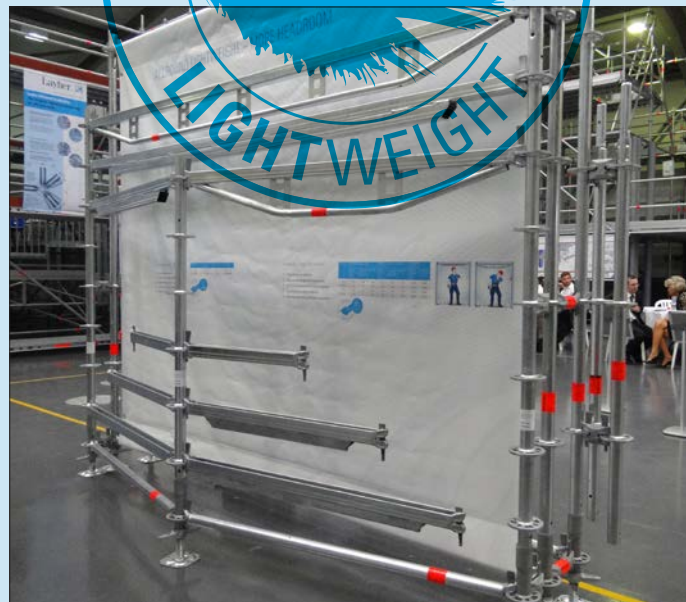
“These are sentiments that we can echo, both in the UK and internationally,” comments Sean Pike, Layher’s UK MD. “I believe that the commitment to innovation that was at the forefront of our recent event – seen in developments such as the Allround Lightweight and TG60 shoring systems – as well as our commitment to expanding our depot network, are clear evidence of our belief in this forward looking trend.”

The benefits associated with Layher systems, particularly in terms of versatility, time savings and cost efficiency will all play a major part in the forthcoming period. We are confident that these are advantages that are recognised both in the scaffold contracting sector and in the range of end user markets in which we are active.

“There is clear evidence that the dark clouds that have hovered over the construction sector for a number of years are beginning to part and I believe we can all look forward to the future with renewed enthusiasm,” continues Sean Pike. “The range of projects that are highlighted in this issue of Update Layher clearly demonstrates the suitability of our systems and, in many cases, the creativity and skills of the contractors who work with us.

“A Happy New Year to everybody involved!”

- ☒ HIRE & SALES
- ☒ EQUIPMENT
- ☒ DESIGN
- ☒ SUPPORT
- ☒ EXPERIENCE
- ☒ VERSATILITY
- ☒ EXPERTISE



The recent UK launch of the Layher Allround Lightweight scaffolding system has already met with an enthusiastic response from Layher's contracting customers.

- Innovative AutoLock function for easier, faster connections
- High tensile steel reduces weight not strength
- Reduced weight enables lower shipment costs
- Faster erection and dismantling
- Integrated spigot optimises load bearing of standards
- Higher scaffolds possible

“With the focus on safety, performance and cost effectiveness, we believe that the Allround Lightweight ticks a long list of boxes for both contractors and end users alike,” comments Sean Pike, Layher’s UK MD.

Weight saving of up to **1.6 kg**

Allround U-Ledger LW Reinforced

Allround Standard LW

**NEW** +100 mm headroom

NEW

+100 mm headroom

**It's because you asked for safer, faster scaffolding erection and dismantling ...**

**When you told us that lighter and stronger system scaffolding would improve your productivity and performance ...**

**We've cracked it!**

**Allround Lightweight.**

Lightweight scaffolding. Heavyweight benefit.

• Automatic Wedge improves safety and further increases productivity

- High tensile steel reduces weight 40% strength
- Reduced weight 40% allows lower alignment costs
- Faster erection and dismantling
- Integrated layout optimises load bearing of standards
- Higher scaffold heights
- 20% greater loading strength
- Increased Maximum working access and use
- Fully compatible with existing Layher Allround system scaffolding equipment
- Optimisations for rapid RCI
- Specialist Layherweight videos

**Call us now to learn more about Layherweight**

**The past, present and future of system scaffolding**

✓ QUALITY

✓ DESIGN

✓ SUPPORT

✓ CAPABILITY

✓ RELIABILITY

✓ DURABILITY

Layher Limited

Marx Road

Leatherhead

UK

01842 475100

Fax: 01842 475101

Layher Limited

Leather Road

Leatherhead, Surrey

UK

01842 475100

Fax: 01842 475101

Opening to end 2013 -

Layher Limited

Marx Road Business Park

Leatherhead, Surrey

UK

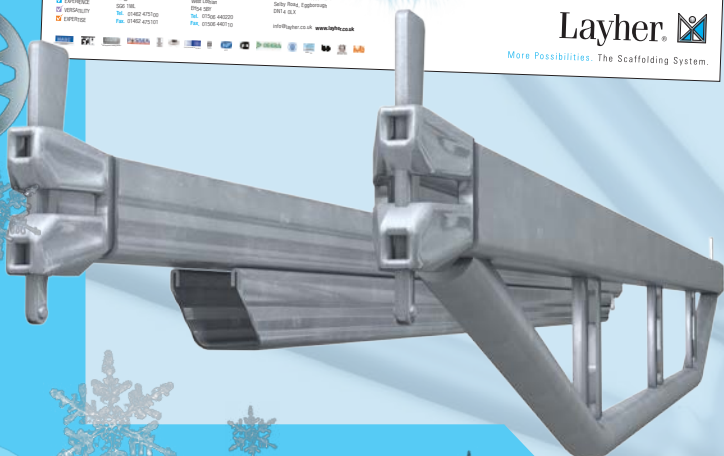
01842 475100

Fax: 01842 475101

www.layher.co.uk

**Layher.**

More Possibilities. The Scaffolding System.





# Weight lifts off!

The innovative design offers a list of key benefits to users – all centred on enhanced safety, strength and effectiveness in use. In particular, installations stand to gain from –

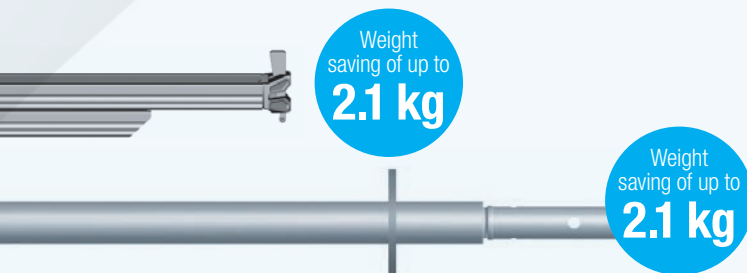
- 24% greater bending strength
- Increased headroom eases access and use
- Fully compatible with existing Layher Allround systems scaffolding equipment
- Opportunities for rapid ROI
- SpeedyScaf Lightweight option

“Both in the UK and across Europe, the early indications are that this latest demonstration of our commitment to ongoing innovation is being widely welcomed.”

## Function for easier, faster connections



## Reduce weight and save money, promising strength



## Back strain and greater productivity





# Refurbishment site benefits – even for the wildlife!



Roof and stonework repairs at the impressive Tempsford Hall, the Kier Group headquarters in Bedfordshire, have benefitted from Layher systems – and were fully appreciated by the local bat population! The project had to be completed in a 16 week

period when, experts advised, the site would be free of bats. “As a protected species, there was no leeway in the scheduling so equipment and methods that could guarantee completion on time were fundamental,” says Christopher Dowse, Operations Director at Modus Access,

who undertook the scaffolding installation work.

The speed and simplicity of the Layher Keder XL system played a key role through a 23 metre long installation that covered a 16 metre span. Assembled on the ground, it was craned into position, enabling one full bay to be fixed while another was assembled.

The completed temporary roof was located on scaffold runners using nylon wheels and was rolled along the 45 metre structure to provide covering as the project moved ahead. Layher Allround was also used as the support scaffold which, importantly, required minimal ties to the listed building.

“The finished product was received well by all ‘working trades’ that used the installation at the various stages of the external refurbishment,” adds Mark Bates, Kier Senior Project Manager.

## In the spotlight in Sunderland

One of the largest scaffolding installations of its type ever installed by Acorn Scaffolding has played an important role during a major music concert at the Stadium of Light in Sunderland – and within the strict time schedule associated with the project.

“We created a scaffold support system for the stage platform as well as installing the roof structure, two ‘follow-spot’ towers and a key loading ramp,” comments Acorn Scaffolding’s MD, Andy Nutter.

The towers were erected to 20 metres with 80 tonnes of kentledge positioned within the two frameworks, while the loading ramp was located at the rear of the stage to provide four metre wide access that dropped six metres from the entrance to stage level.

Andy Nutter points out that Layher Allround scaffolding was used throughout as its modular design made a significant contribution to the

installation window that was available.

“This was clearly a major event by an internationally famous performer at one of the prime event locations in the north of England so it was vital that all aspects of the installation met key parameters in terms of structure, erection speed and, of course, safety,” concludes Andy Nutter.





# Suspense is ideal for accommodation project

The need to avoid loading on an adjacent flat roof during the construction of two new accommodation buildings at Highams Park has been met with an innovative scaffolding design by Fast Fix Scaffolding Ltd. using the Layher Allround system. The company

installed a hanging scaffold – some 25 metres in length – to provide access at up to five levels.

“While we could build conventionally from ground level on the other sides, along one full run, no loading could be placed on a lower flat roof structure that abuts the new apartments,” explains Tom Hall, Technical Director at Fast Fix. “By taking the suspended weight through the support towers counterbalanced with kentledge on the new roof top and with the ends of the structure linked to the ground-based scaffold to

provide access from the main scaffold, an important risk was avoided.”

Installed for main contractor McLaren Construction, the scaffolding provided access for rendering and brickwork cladding and benefitted from two metre high lifts created throughout, with cantilevered inside boards also designed-in to provide edge protection at balcony slab levels.

“The fact that the balconies are staggered was fully addressed by the adaptable nature of the Layher system scaffold,” concludes Tom Hall.



## Crossing the road – the Layher way

Maintenance work alongside the North Circular Road in London has seen a Layher temporary bridging system – installed by Pro Access Scaffolding – help to minimise road closure needs and produce dramatic cost savings compared with alternative solutions.

Undertaken for Balfour Beatty Utility Solutions working for National Grid, the temporary bridging structure helped to ensure pedestrian access was maintained over the road throughout the project, which was centred on electrical cable work.

“We used the Layher Staircase and Allround Bridging Truss systems,” says Mark Chapman,

Pro Access Director, who points out that concrete blocks were used as kentledge at key points, in tandem with additional wind-bracing.

“Our solution meant minimal road closure needs, the eradication of a requirement to install a separate pedestrian crossing and just a minimum amount of lane restriction for worker safety,” adds Mark Chapman.

The modular design of the system enabled manual erection at the site, with a crane only brought in to help dismantling overnight – a process which took just 4.5 hours. The footbridge itself was closed for less than one day throughout the entire project.





Layher's ongoing commitment to product innovation is again in evidence with the new TG60 shoring system. The frame-based design offers a number of key benefits to users with the patented, integral erection procedure complying with NASC Safety Guidance SG4:10 which means the scaffolder is always behind a protective guard rail.

Everybody involved in the construction sector will recognise and appreciate its key advantages -

- Design is centred on just three frame designs, each providing 60kN of loading capacity per leg or standard.
- Integrates fully with existing Allround stocks.
- Lightweight design facilitates ease of handling – no component weighs more than 18kgs.
- Rosette connection system minimises number of standard parts required.
- A 30% time saving, compared with installations using individual standards and ledgers, has been shown.
- Wedge head design and permanently integrated spigots contribute further to ease and speed of safe erection.
- Design allows build process to be undertaken from the ground upwards or, if required, pre-assembled for craning into position.
- Bay configuration means rectangular scaffolding construction is achieved automatically.
- Purpose-designed pallets – which can house all three frame sizes – optimise both transport and storage procedures.
- The TG60 package includes detailed technical documents ranging from material requirement tables and rating aids to verified structural analysis information.

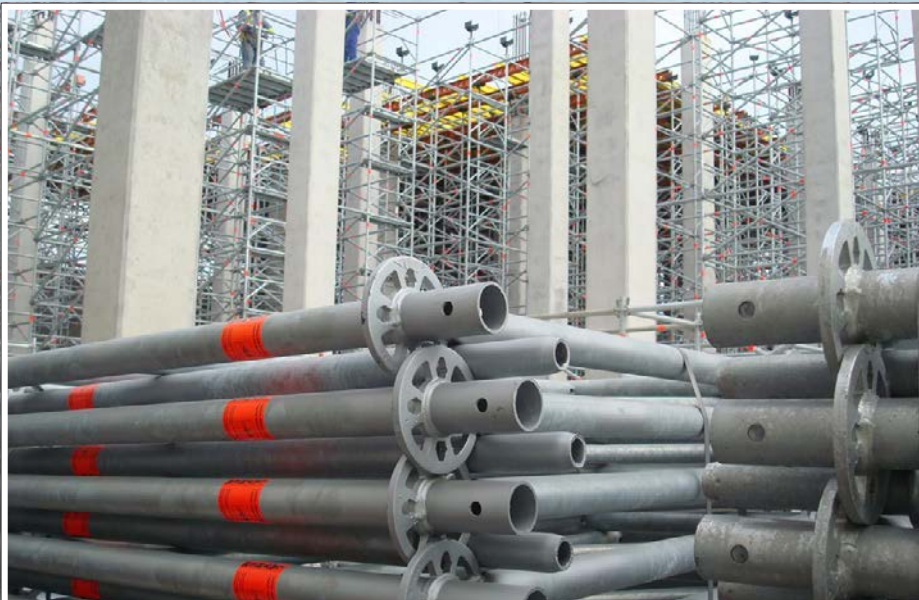
"We strongly believe that the addition of the TG60 shoring system to our range will provide our users with new opportunities in a key area of the construction and civil engineering sector," says Sean Pike, Layher's UK MD. "It represents a major addition to our range and is set to enhance further our well-established track record across all areas of the construction industry."

# New TG60 shoring system has much to offer





# First TG60 use scores well in Liverpool



One of the first uses in the UK of the Layher TG60 shoring system has been undertaken in Liverpool, at the heart of a major construction project that includes the largest concrete pour currently in Europe – some 11,900 cu.m. The design is providing a safe, fast and versatile support system during the construction of a new waste water treatment plant being undertaken by Galliford, Costains and Atkins (GCA) Joint Venture for United Utilities.

The design features a total of 16 water holding tanks constructed on two levels, each measuring 51 m x 45 m x 10 m in height and housing 72 reinforced concrete columns that act as support for a 650 mm deep concrete slab. This provides both the roof for the eight cells at the lower level, and the base for the eight to be built above.

The TG60 system has a footprint of 2,000 sq. m. erected between the concrete columns, and has been enthusiastically received by the main contractor appointed by GCA – Bowercross Construction, who hired the equipment from George Roberts (NW) Ltd.

"The system is an estimated 35% faster than comparable shoring systems," says Sean Pike, Layher's UK MD. "For example, two towers plus linkages, with a 1.090 m x 2.072 m square footprint, linked to the next tower by 1.572 m Allround ledgers, could be erected to their combined, full ten metre height by a team of three men in less than an hour."

The TG60 shoring system is already well-established in the European market and its introduction into the UK has created considerable interest.

"Its use for such a high profile and large scale project as the new water treatment facility in Liverpool demonstrates the tangible advantages that it offers, and the beneficial impact on project scheduling and quality," adds Sean Pike.

It is a view echoed by Phil Gorton, Sales Director at George Roberts (NW) Ltd – "It is a worthy addition to our stock of innovative Layher products and has proved to be a great success in terms of safety and speed of erection, accelerating the build programme for our client, Bowercross Construction, who have confirmed that moving forwards they will only use TG60 on all future projects."



# Accessing station developments



Karl Degroot, Operations Director at Connect Scaffolding.

The Connect team carried out a full pre-build of the structure off site to ensure track possession requirements were kept to a minimum, with the bridge craned into place during a single overnight possession. Two DDA compliant public access staircases – from Layher – were also fitted.

“Network Rail is working to provide better disabled access systems at stations as part of the ‘Railways for All’ strategy with the organisation focusing on developing stations that will provide modern facilities while retaining their historic value,” adds Oliver Cave, MD at Connect Scaffolding. “We are delighted that by combining our experience of the equipment with the commitment of our specialist team – established to work specifically on Network Rail infrastructure – delivery was completed safely, on time and within budget.”

As part of Network Rail’s commitment to improving the access at three stations in London, Connect Scaffolding Ltd. was appointed to install a temporary pedestrian footbridge across the tracks at New Cross

Station for main contractor Kier MG.

“Due to the limitation with possession times we needed a solution that was safe, well-engineered and quick to install so our design team utilised the Layher Bridging System,” says

One of the most prestigious 17th century country houses in England has gained from the use of Layher Allround scaffolding and the Keder XL roofing system during refurbishment work.

The installation – undertaken at Audley End House in Saffron Walden by Connect Scaffolding on behalf of conservation specialists, Fairhurst Ward Abbots Ltd. – provided a bespoke access solution and large span, temporary roofing encapsulation. The project provided multi-level access to the building’s facade and translucent weather protection for the roof area and, importantly, accommodated key factors

associated with the English Heritage site.

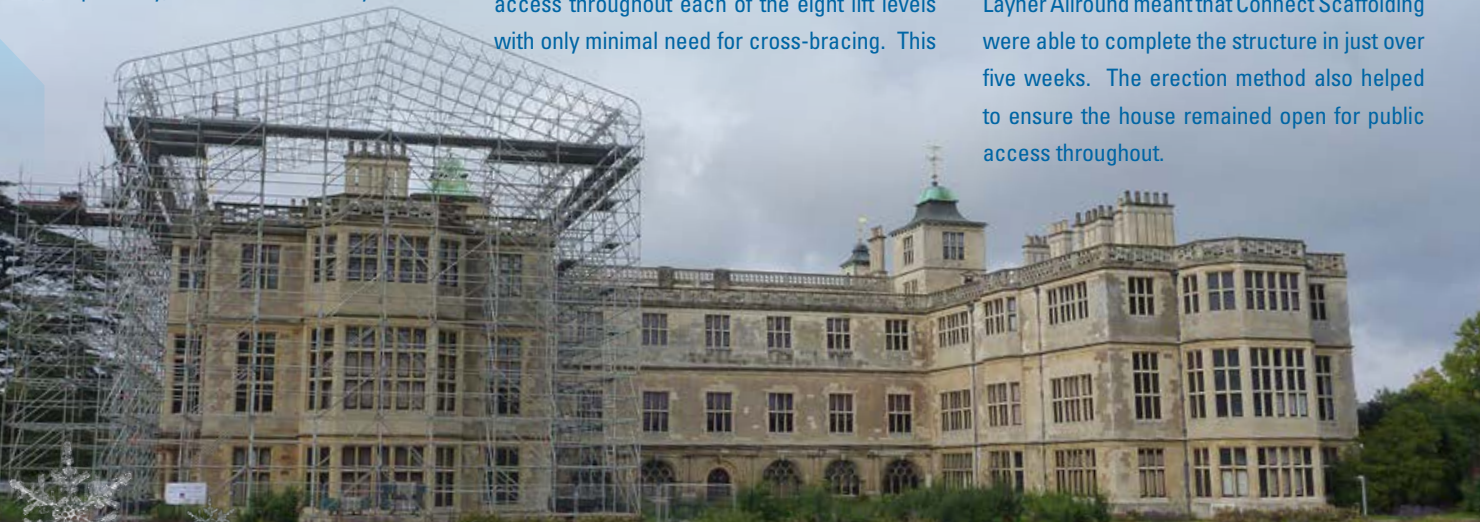
“It was important that the installation was free-standing to minimise contact with the building structure whilst a clean façade line and both pedestrian and vehicle access to the front elevations and west wing were also key objectives,” comments Connect Scaffolding’s Operations Director, Karl Degroot.

“We opted for the Layher solution – with its minimal number of components and wide bay design – as it helped these key requirements to be fulfilled and because it provided wide access throughout each of the eight lift levels with only minimal need for cross-bracing. This

proved a significant aid to the refurbishment specialists working at the site, as did the Keder XL roof system.”

He explains that this was built in bay sections at ground level and then craned into position where translucent sheeting was pulled over the apex via in-built runners. “The translucent design also meant the maximum benefit of the natural light could be enjoyed, which was a further benefit for the workforce at the site,” adds Karl Degroot.

Working closely with the client, the design of Layher Allround meant that Connect Scaffolding were able to complete the structure in just over five weeks. The erection method also helped to ensure the house remained open for public access throughout.



## Helping to make the most of England’s heritage



# Clear Layher benefits for remarkable glass structure



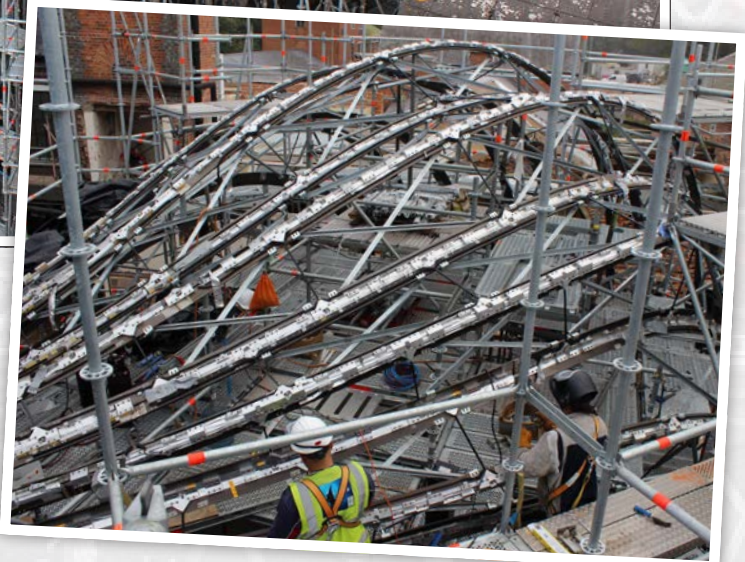
One of the most dramatic examples of the versatility of Layher Allround scaffolding ever seen in the UK has been at the heart of an exciting new development in Hampshire. The restoration and conversion of Laverstoke Mill into a distillery for the famous Bombay Sapphire gin brand features two new glasshouse structures designed for the cultivation of both Mediterranean and tropical herbs, which are key to the production process.

"Providing scaffold access for such an unusual shaped structure and within very tight areas of access has been particularly challenging," comments Christopher Dowse, Operations Director at Modus Access UK, who undertook the installation work using the Layher system. "Measuring 11 metres in diameter by 15 metres in height, and 9 metres in diameter by 11 metres in height, each glasshouse featured three distinct construction areas, each of which had to be progressively accessed by the scaffold design," he explains. "These comprise a 'neck area', which links the two state-of-the-art dome designs to the existing brick building, a 'base zone', built from the foundations, which then connects to the third area – the 'central zone'. Both internal and external scaffolds were

required throughout," he continues, "neither of which could come into contact with the other."

Fully boarded access was provided throughout with the ability of the Allround design to accommodate circular structures clearly demonstrated. Its adaptability was also important with planned alterations made to the scaffold layout as the work proceeded.

"Importantly, the installation of the structure had to accommodate very tight physical limitations between the building and the adjacent River Test," adds Sean Pike, Layher's UK MD. "The quality of the access work achieved by Christopher Dowse and his team at



Modus – who undertook the project for design, fabrication and installation specialist, Bellpart – is of the highest quality and reflects not only on their own skills but also on the suitability of our scaffold system to meet even the most challenging installation objectives."





# Capital access solutions in London



The benefits, versatility and speed of Layher equipment have been in clear evidence at two major refurbishment sites in London – with the access scaffolding, in each case, installed by Admiral Scaffolding.

Restoration work at Swan Court in Chelsea and Southbury Tower in Swiss Cottage, being undertaken by Triton Restoration, have seen up to 10 lifts installed on each building to enable brickwork repair and window replacement specialists to undertake work safely and efficiently while both buildings remained occupied throughout.

“At Swan Court, apart from providing scaffold access to each façade, the design also ensured the fire escape facility for the building’s occupants remained operational,” comments Craig Withers, Director of Contracts at Admiral Scaffolding. “Additionally, we had to accommodate a large archway in one face of the building which was achieved via a U-beam design.”

Across London at Southbury Tower, access to each elevation of the tower block was achieved on all four sides simultaneously. “The adjustable bay options that are a feature of Allround scaffolding played a key role here, particularly as a series of balconies had to be accommodated,” comments Clive Rowe, Layher’s Area Sales Manager. “Admiral Scaffolding also installed a range of lift heights as part of the scaffold structure to accommodate the specific requirements of Triton Restoration – an objective which, again, was significantly helped by the versatile design of the Allround scaffold system.”

“Both are excellent examples of our systems in use as part of major residential refurbishment projects and of the suitability of the Allround design to incorporate multi-level decking with minimal cross-bracing. This was a significant aid to the range of trades on site,” concludes Sean Pike, Layher’s UK MD.

## Reaching across in Putney

One of the most dramatic projects to use the Layher Allround Bridging System to date has been completed at Putney Station in London. Interlink Scaffolding Ltd., from County Durham, has installed a structure spanning some 30 metres across two train lines which also incorporates two bridges – one for construction

use with the other accommodating some of the 30,000 passengers who pass through the station each day.

“This project had complex requirements in terms of design, health and safety and programming,” comments Mark Eddy, Commercial Director at Interlink Scaffolding

Ltd. “We approached Layher who worked closely with our engineers and C. Spencer, the main contractor, to design a system that we erected in a total of just four days. With no previous experience of the system, our crew was fully trained prior to the start date with both safety and hand over objectives achieved efficiently.”

Planned to be in location for some 18 months, the structure is seen as an excellent example of the versatility of the Layher bridging system. Significantly, the client required a solution that could accommodate stringent site conditions including the absence of access for crane usage and just a single track closure resulting directly from such a busy train line. Layher’s Allround Bridging System fully met these objectives and is now playing a key role in the construction project.





# Major recognitions deserve high praise

We are delighted to offer our congratulations to three of our customers whose work has recently been recognised through the receipt of prestigious industry awards –

## Connect Scaffolding Ltd. – NASC Safety Award

The NASC Safety Award has been awarded to Bishops Stortford-based Connect Scaffolding Ltd. in recognition of how the organisation addresses health and safety issues and its procedures for control and safety management.

“Health and safety is the top priority in our business and we are delighted to have received this award, particularly as it recognises our commitment to involving all our staff in the development of our health and safety policies,” comments Oliver Cave, Director at Connect Scaffolding Ltd. He highlights the company’s development and implementation of ‘safety connections’ on site – designed to raise employees’ awareness of workplace hazards and structured as a method to provide feedback and ideas.

## Deborah Services Ltd. – NASC Health & Safety Award for companies with over 101 employees

At the recent NASC AGM, Deborah Services Ltd. were awarded this highly regarded accolade on the basis of the company’s overall approach to safety, management input, innovation and employee engagement.

Because companies with more than 101 employees often work at larger, more complex and demanding locations – potentially with a greater risk due to the combination of manufacturing processes and task related activities – the award is considered both significant and highly prestigious.

“It is seen as a true measure of the company’s safety pedigree and therefore makes our success especially pleasing,” comments Neil Moffat, Group SHEQ Manager of Deborah Services Ltd. “I am both proud and pleased as this recognises a company-wide approach and a consistent application in a variety of environments. The importance of safety is clear to and constant for everyone in DSL, and I congratulate all the support teams, site teams and delivery teams for their hard work,

dedication and achievements – this is a genuine team success.”

## Alan Staley Building Contractors – Master Builder of the Year Award

Derbyshire-based Alan Staley Building Contractors is proud to have won the Master Builder of the Year Award for Large Renovation Projects in Yorkshire and Trent – awarded by the Federation of Master Builders.

The award centred on the re-roofing and high level repair of Grade II listed Melbourne Hall and is seen as particularly significant as nominations are made by satisfied clients with the judgement based on a builder’s technical capability and customer services skills.

“The project called for full working area access to be provided so the minimum number of components of the Layher system that we used was important,” comments Alan Staley, Managing Director of Alan Staley Building Contractors. “We are extremely proud of this achievement and wish to thank everybody involved in the project – particularly our staff on site and all equipment and system suppliers,” he adds.

“These achievements are thoroughly deserved and we are delighted to have been able to supply the equipment in each case,” adds Sean Pike, Layher’s UK MD. “From our perspective, the awards are particularly pleasing as they echo our own commitment to the importance of safety as a key element in all successful scaffolding and weather protection installations.”



Connect Scaffolding Ltd.



Deborah Services Ltd.



Alan Staley Building Contractors



## The Layher Choice

### ✓ ALLROUND® SCAFFOLDING

Maximised installation versatility centred on Layher's acclaimed 'rosette' design.

### ✓ EVENT SYSTEM

Dedicated equipment designed to be expandable and adaptable – meeting a vast number of concert and sporting event staging, stand and platform requirements.

### ✓ PROTECTIVE SYSTEMS

From 'Protect' containment panels to a choice of temporary roofing systems – all designed to help maximise efficiency and improve the building environment.

### ✓ SPEEDYSCAF®

Simple, manual erection using just five basic components to create a strong, stable access system.

### ✓ FALSEWORK

With a few additional components, Allround® can easily be converted into a falsework system offering back-propping, crash-deck and load support solutions.

### ✓ ROLLING TOWERS

Fast to erect, easy to reposition, safe and with a choice of decking sizes – the optimum answer to mobile access.

### ✓ LADDERS AND STAIRTOWER

Direct stairtower connection to scaffold design provides safe, durable access for multiple personnel use at any height – together with a choice of ladder designs that all offer durability, stiffness, safety and stability.

### ✓ ACCESSORIES

From steel or aluminium unit beams, scaffold tubes, couplers and castors to hoists, nets, wall anchors and hardware, the choice of optional accessories from Layher is innovative and extensive – to maximise the success and effectiveness of every installation.

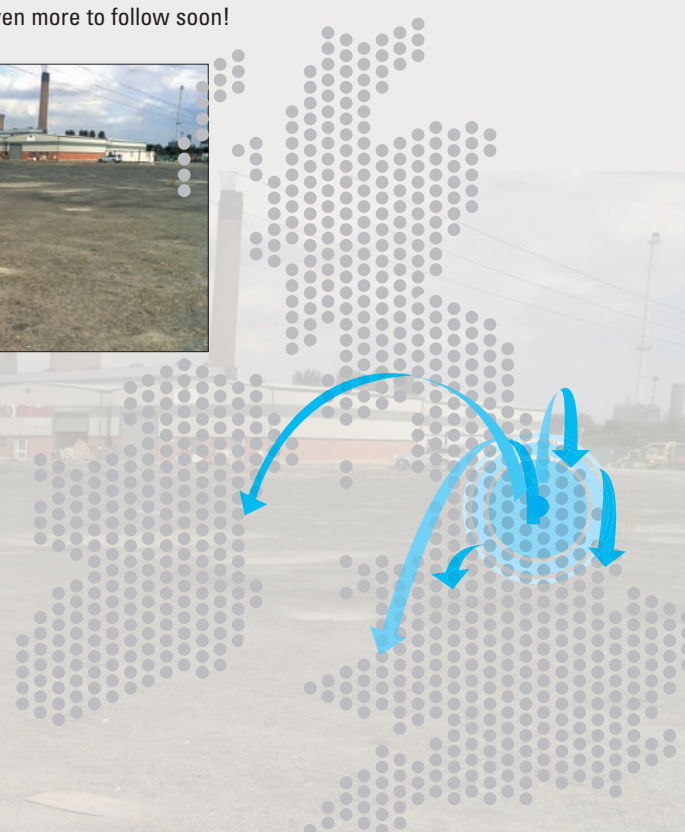
# New depot marks growing confidence

"Our optimism for the future will be comprehensively demonstrated by the opening of our new depot in Eggborough, near Doncaster," says Sean Pike, Layher's UK MD. "Development work is all on track at the site which has been specifically selected for its location in one of the key industrial heartlands of the country." A combination of storage, show and demonstration areas and, in due course, training facilities all form part of the new development.

"We are also delighted to welcome Heath Brown as Operations Manager at the new facility. He has more than 10 years' experience of using Layher equipment so is well versed in its design characteristics and the solutions that it offers."

"I am delighted to be joining Layher at an exciting time in the company's development," says Heath. "Having worked with the equipment for many years, I am very familiar with its safety, versatility, and suitability for a wide range of installations – across both the construction field and within industry. With its continuous commitment to product innovation, I am totally confident of Layher's ability to address a wide range of access and protection requirements."

The new depot will also supplement the successful work in the region already undertaken by Matt Sherwin, Layher's Area Sales Manager for North East and North West England and, operating in tandem with the well-established Letchworth and Livingston depots, adds to a comprehensive, geographical network . . . with even more to follow soon!



Layher Limited,  
Works Road  
Letchworth  
Herts  
SG6 1WL  
Tel. 01462 475100  
Fax. 01462 475101

Layher Limited  
Letham Road  
Houstoun Ind Est., Livingston  
West Lothian  
EH54 5BY  
Tel. 01506 440220  
Fax. 01506 440110

Opening by end 2013 -  
Layher Limited  
North Point Business Park  
Selby Road, Eggborough  
DN14 0LX  
info@layher.co.uk  
www.layher.co.uk

# Layher®



More Possibilities. The Scaffolding System.

