

Update

Layher®



- ✓ EQUIPMENT
- ✓ DESIGN
- ✓ SUPPORT
- ✓ EXPERIENCE
- ✓ VERSATILITY
- ✓ EXPERTISE

DECEMBER 2012

**Layher
Allround
Scaffolding®**



“Layher Open Day ...
the new Keder XL
Temporary Roofing system
in the spotlight”



Another great event success in 2012

With a major new product focus, a chance to mingle with senior Layher personnel and even an opportunity to learn a little about German wine – the latest Layher Open Day offered unmissable opportunities to all contracting customers to discuss up to date details on product developments and key industry issues.

Following the success of the 2010 event, this year's gathering in September in Letchworth

placed the new Keder XL Temporary Roofing system in the spotlight. The design can reach a remarkable 40 metre span and fully complements the company's range of temporary roofing and scaffolding systems.

Layher's UK MD Sean Pike was joined by two of the company's principal shareholders – Carolin Langer and Georg Layher – and International Sales Manager, Margot Hofmann.



More photos on back page.

**In this
issue**



New Keder XL rolls out

2



Access solutions in the field

4



Focus on Layher Event Systems

5

**STOP
PRESS**

A new depot, a new website and a new Sales Manager in Scotland... major additions to Layher's capability are announced. See features on page 11.

New Keder XL rolls out for the first time

LEICESTER

Leicester's Highcross Shopping Centre has been

the first to gain from the new Keder XL temporary roofing system during roof-glass replacement above the Centre's east mall. For principal contractor, Trant Construction, Pro Access Scaffolding erected a moveable Keder XL roofing structure, which has been relocated, as required, during the 34-week refurbishment programme.

"The glass roof above the east mall runs for some 100 metres, 35 metres of which were covered by the apex configuration of the Layher XL roof system," comments Martin Forsythe, Director of Pro Access Scaffolding Ltd. "Mounted on nylon castors on rails, the structure was repositioned as the work progressed and also met the need for crane access as required."

The Keder XL roof is built off an Allround scaffold. Tube and fitting scaffolds support the crash deck which was mounted on 120 Layher 750 aluminium beams.



Rooms with a view

DORSET

Modus Access UK, working with specialist building contractors, Moulding & Co., installed some 400 m² of Keder roof weather protection. With the involvement of 48.3 Scaffold Designs Limited, the structure was completed in just eight days to cover roof and remedial carpentry work on the beautiful Grade II listed Cranborne Lodge in Dorset.

Built from the Centre's car park alongside, the effect of the structure was minimised. "Only 10% of the parking bays were removed, which is significantly fewer than originally envisaged," says the Highcross Building Services Manager.

"The Keder XL design is centred on a lightweight frame with an integral track through which translucent Keder sheeting can be pulled to create a highly weather-resistant enclosure," comments Layher's UK MD, Sean Pike, "the benefits of which have been clearly demonstrated in Leicester."

A simple design w

- Nominal span up to 40 metres.
- The only roof beam with an integrated sheeting track means fewer parts.
- Light, standard and heavy-duty installation/longspan variants available – using the same roof beams.
- New tension bar system maximises load-bearing capacity and thus span.





Keder XL passes test during former school refurb

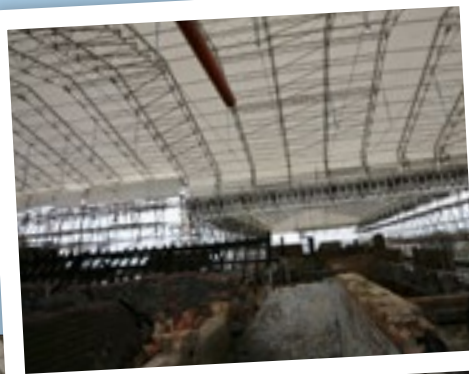
LONDON

Grenrose Scaffolding Ltd., working for client Anglia Brickwork, has used Layher's new Keder XL roofing system during roof refurbishment of an old school building, now luxury apartments. "It is a great looking system – easy to construct and could be moved by just six men," says Bob Quorn, Director of Grenrose Scaffolding. "This building has a complex layout and eaves at 19 m," he continues. "We erected tube and fitting scaffolding to include a table lift at one gable end from which roofing sections could be rolled out on the castor and tri-beam assembly. The resulting Keder XL roof spans some 23 m x 15.4 m length."

With major benefits

- Arch/domed roof configurations possible.
- Diagonal bracing required as little as only every 5th bay.
- System includes both roof and gable Keder sheeting options.
- Keder roof design easily interfaces with other scaffolding equipment and can be installed directly onto support structure.

Fire damaged school ... Keder XL proves the academic choice



LONDON

Haberdashers School, New Cross, London required a temporary

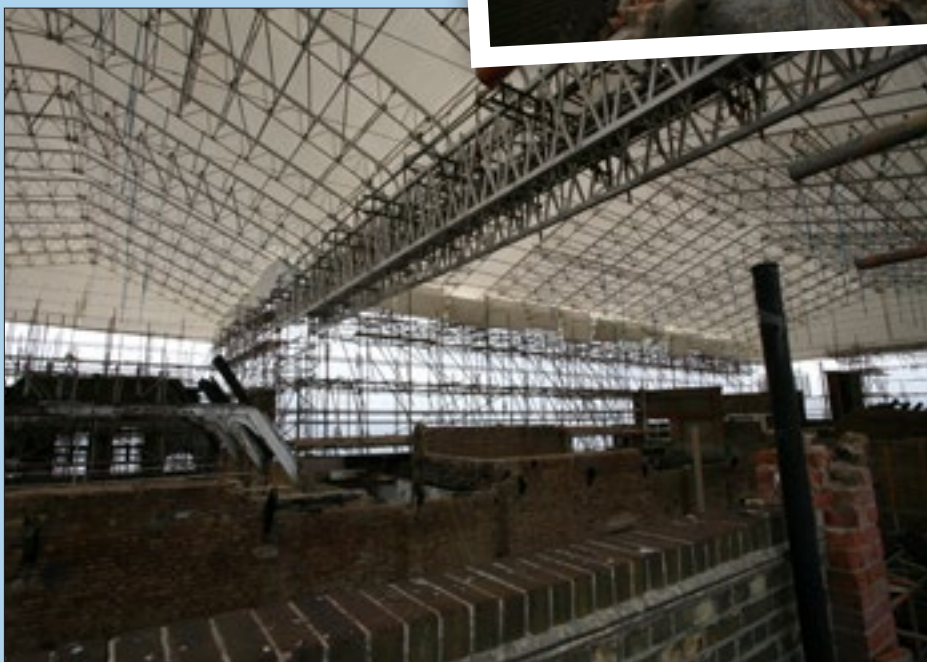
roof cover following severe fire damage.

TONE Scaffolding Services Ltd designed the tube and fitting support structure which included a huge buttress and impressive 1.5 m deep x 18 m span aluminium spine beam, supported by two Layher Allround Power towers.

Andy Needham, Managing Director of TONE Scaffolding Services Ltd, decided upon the new Layher Keder XL roof due to the likely length of the contract seeing the temporary roof potentially having to support high snow and wind loads through the Autumn and Winter months. Additionally, the support scaffold and the Keder XL roof sit relatively higher than the last set of wall anchors, therefore a robust temporary roof solution was required.

The Keder XL roof is strong, lightweight and utilises a unique tie chord tensioning system, which was required to restrain the roof forces from reacting against the support scaffold.

To date, this is the largest Keder XL roof erected in the UK and is in total some 1,600 m² plus.



Helping meet vital access needs at historic site

LONDON

Key Layher scaffolding design features have played a significant role during refurbishment work at the Queen's Chapel of The Savoy in London. Tom Hall, Technical Director of Fastfix Scaffolding, who installed the system, explains –

"C Ansell & Sons – working for the client, The Duchy of Lancaster – required a scaffold structure to three levels within the chapel, with a particular focus on refurbishment of the historic stone around the stained glass window areas," he says. "Importantly, this had to be done so that planned usage of the chapel during the refurbishment could continue uninterrupted and that, vitally, the risk of damage to the chapel structure itself was kept to an absolute minimum.

"We created four separate towers using Layher Allround, which could be rapidly disassembled and re-erected if full use of the chapel was required during the



Image owned and kindly provided by the Duchy of Lancaster.

works," he says, pointing out the presence of fixed pews and seats prevented the use of a rolling tower. Smaller size components also helped minimise unnecessary risk

that could have arisen from handling larger tubes – crucial in such a unique and valuable environment.

Providing access solution at Sullom Voe

SHETLAND

The lightweight design and versatility of the Layher Allround scaffolding system has made a significant contribution to the ongoing maintenance at one of the UK's major oil

terminals. Installed at Sullom Voe in Shetland – a key BP facility – by specialist contractor BIS, the equipment offers key advantages, as Vince Bojter, Scaffolding Supervisor for BIS explains – "The initial focus of a 300 metre long jetty centred on blasting and painting of

both the jetty and the pipe work installations with the latter also undergoing removal and replacement of insulation," he says.

"Scaffolding that provided good access to all the working faces and could be installed around the jetty structure was therefore vital – given the lack of ground support from which to build."

A Layher Allround hanging scaffold was constructed, fitted with Layher steel decking to create an ideal working platform that also gained from minimal cross-bracing. Vince Bojter also points out that the eight weeks required would have extended to 14 weeks using conventional tube and fitting equipment.

"Working with Layher, we were also able to develop a special friction clamp design to enable the scaffold to be partly suspended from the pipe work itself," adds John Jamieson, BIS Manager at Sullom Voe.





Pictures provided courtesy of Media Structures Limited

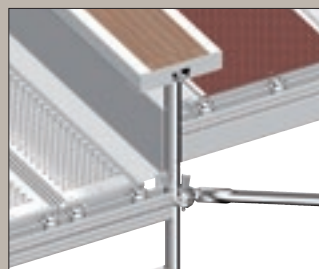
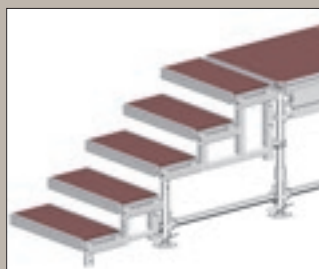
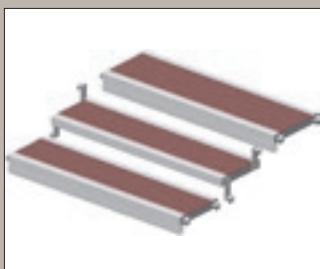
Layher Event Systems

Layher's extensive expertise and purpose-designed event systems have long played a major role in contributing to the success of events both small and large, and even those with truly global standing.

From the Jubilee events in London to major sporting events, these *Focus on Events* pages highlight just a few examples where the combination of high quality installation expertise from leading contractors and Layher equipment design have come together to help meet the diverse range of needs – including staging, seating and public access – with truly memorable results, every time. In short . . . a genuine winner!

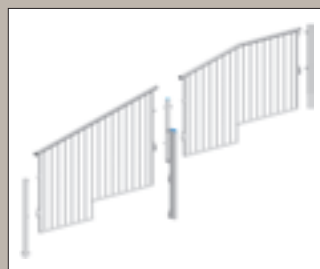
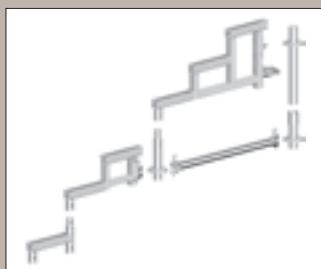
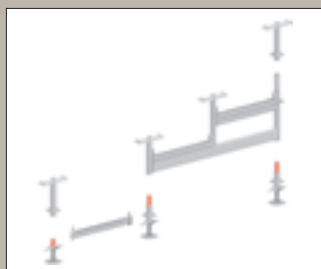


Pictures provided courtesy of Acorn Event Solutions Limited





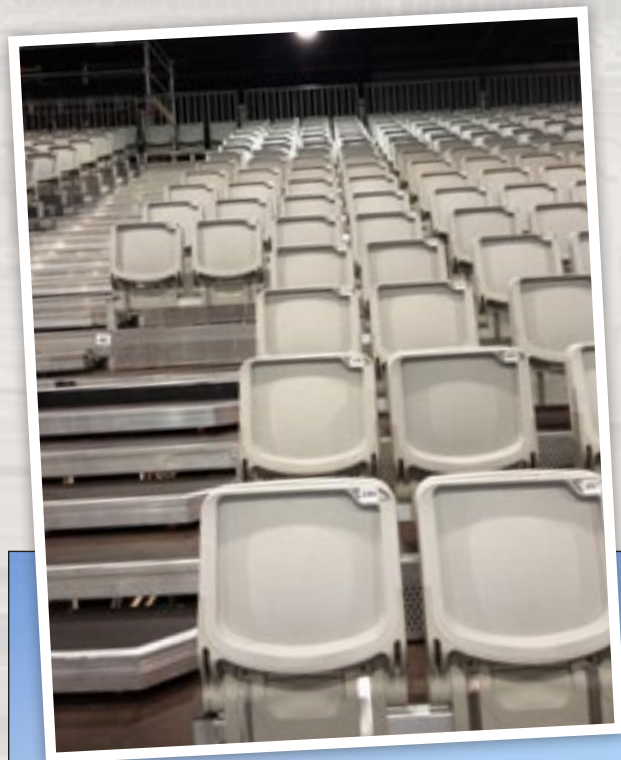
Pictures provided courtesy of PHD Modular Access Services Limited



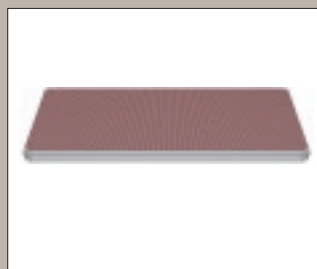


Pictures provided courtesy of Connect Scaffolding Limited

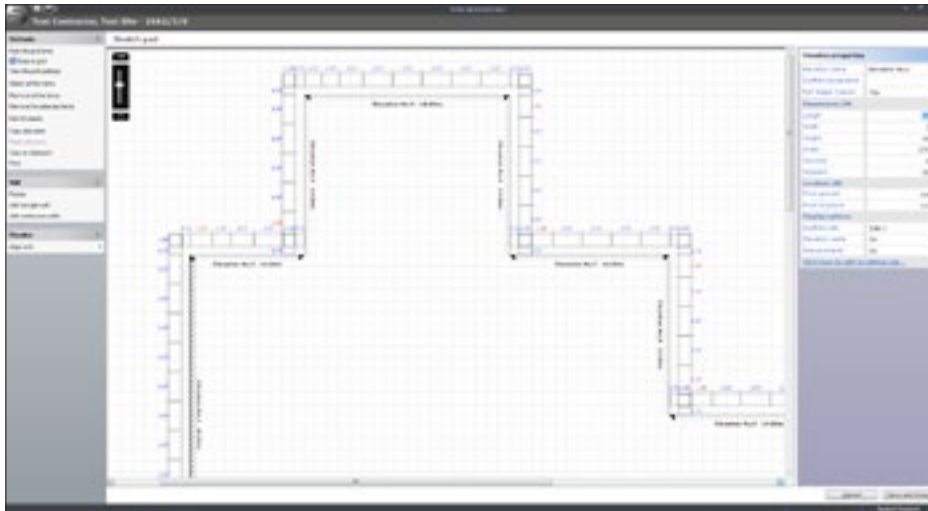




Pictures provided courtesy of EventServ Ltd



New software brings designs to life



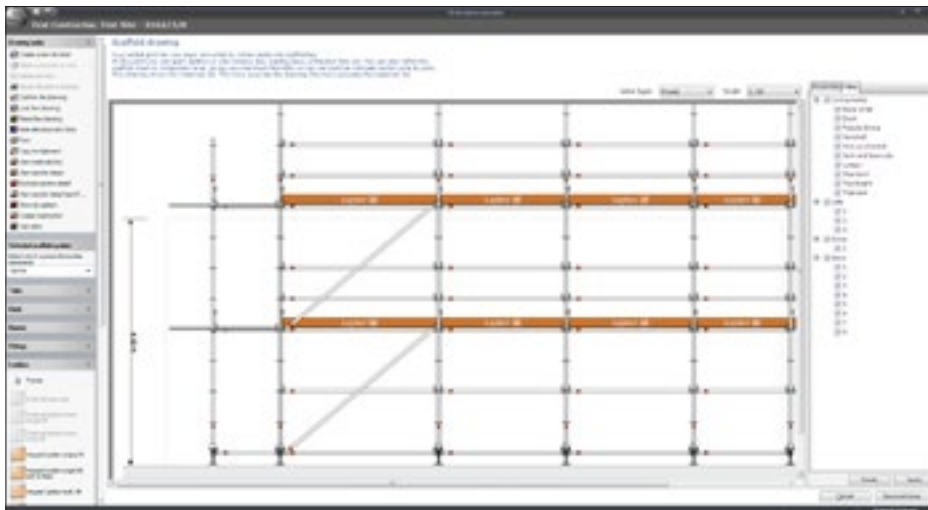
The recently introduced Layher Ltd UK Technical Guide is now to be brought to life through the availability of innovative design software.

StrikeSoft Ltd. has worked with Layher to develop a drawing and estimating package – ‘Strike Alpha Allround’ – which benefits the design and technical aspects of the Layher Allround scaffolding system.

“Customers can save time and money by just inputting scaffold dimensions and clicking the mouse to create 2D and 3D drawings that are auto-checked for compliance with our Technical Guide,” says Layher’s UK MD Sean Pike.

Toby Cave, StrikeSoft’s Commercial Director adds –

“Strike Alpha Allround is the perfect tool for number crunching of this type – loading lists can be created for complete scaffolds to single elevations or on a lift by lift basis. Contractors building scaffolds – from facades and birdcages to loading towers and bridging structures – stand to gain, particularly as it enables their design departments to work closely with Layher’s in-house design team to produce optimum results every time.”





Key appointment in Scotland & Ireland

We are delighted to announce developments to our business focus in Scotland with the appointment of Andrew Lawson to the position of Area Sales Manager for both Scotland and Ireland.



Andrew Lawson,
Area Sales Manager,
Scotland and Ireland

Bringing with him construction industry experience in both sales and marketing, Andrew is based at Layher's Livingston premises from where he is ideally positioned to support existing clients and seek new business opportunities.

“I am committed to maximising our presence in industries that we serve in both the Scottish and the Irish markets – from general construction through to specialist application areas such as the oil industry. The availability of equipment at the large depot in Livingston, and also the opportunity to develop further training and demonstration areas on site is extremely exciting.”

“We are very happy to welcome Andrew to the organisation and are confident that he will be able to build on the success that we have achieved in the region,” adds Layher UK's MD, Sean Pike. “The benefits of our equipment are enhanced by accessible and capable support services, and we are certain that Andrew will be able to contribute significant experience and skills in this regard,” he concludes.

Click and go! New site goes live



The new Layher UK website is now up and running and has been designed to offer users ease of access to a vast range of key information.

From corporate and product summaries and training details to access to brochure downloads and a list of case study examples, a comprehensive guide to Layher's equipment and support capability is now detailed on the new site.

“We've also included an innovative Applications section,” says UK MD, Sean Pike, “which enables visitors to focus directly on their specific needs. By clicking on a range of industry definitions – from weather protection and civil engineering to offshore and the rail industry – businesses are taken directly to the most appropriate information, reflecting our belief that speed and relevance are key requirements with all websites.”

www.layher.co.uk

New north of England depot – coming soon!

Layher's ongoing success in the UK has prompted a focus on planned expansion in the north of England. Moves are underway to establish a north of England depot in the Wakefield region to bring both Layher's products and expertise directly to the marketplace.

“We are currently researching available premises that would provide a yard, warehouse and trade counter facility and would give us the opportunity to offer both training and demonstration areas in the future,” says Layher's UK MD, Sean Pike. “This is clearly an important part of the country and one

which we are confident offers significant opportunities for development – with the Wakefield area a logical location between our Letchworth head office and our facility at Livingston in Scotland. “We hope to be making more detailed announcements over the next few months,” he adds.

Informative and enjoyable ...

Guests at the recent Layher Open Day were able to hear key product development information, meet old and new acquaintances and even enjoy some traditional hospitality!

The Layher Choice

■ ALLROUND SCAFFOLDING®

Maximised installation versatility centred on Layher's acclaimed 'rosette' design.

■ EVENT SYSTEM

Dedicated equipment designed to be expandable and adaptable – meeting a vast number of concert and sporting event staging, stand and platform requirements.

■ PROTECTIVE SYSTEMS

From 'Protect' containment panels to a choice of temporary roofing systems – all designed to help maximise efficiency and improve the building environment.

■ SPEEDYSCAF®

Simple, manual erection using just five basic components to create a strong, stable access system.

■ FALSEWORK

With a few additional components, Allround can easily be converted into a falsework system offering back-propping, crash-deck and load support solutions.

■ ROLLING TOWERS

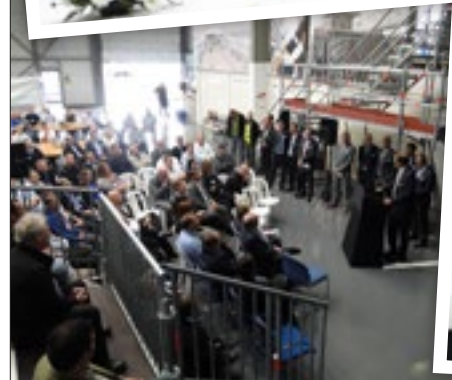
Fast to erect, easy to reposition, safe and with a choice of decking sizes – the optimum answer to mobile access.

■ LADDERS AND STAIRTOWERS

Direct stairtower connection to scaffold design provides safe, durable access for multiple personnel use at any height – together with a choice of ladder designs that all offer durability, stiffness, safety and stability.

■ ACCESSORIES

From steel or aluminium unit beams, scaffold tubes, couplers and castors to hoists, nets, wall anchors and hardware, the choice of optional accessories from Layher is innovative and extensive – to maximise the success and effectiveness of every installation.



Layher Limited,
Works Road, Letchworth
Hertfordshire
SG6 1WL

Tel. 01462 475100
Fax. 01462 475101
info@layher.co.uk
www.layher.co.uk

Layher Scotland, Letham Road
Houstoun Industrial Estate
Livingston, West Lothian
EH54 5BY

Tel. 01506 440220
Fax. 01506 440110
info@layher.co.uk
www.layher.co.uk

New Wakefield branch coming soon

Layher 

More Possibilities. The Scaffolding System.

