

# Update

# Layher®



- ✓ EQUIPMENT
- ✓ DESIGN
- ✓ SUPPORT
- ✓ EXPERIENCE
- ✓ VERSATILITY
- ✓ EXPERTISE

JUNE 2011

**Layher  
Allround®  
Scaffolding**



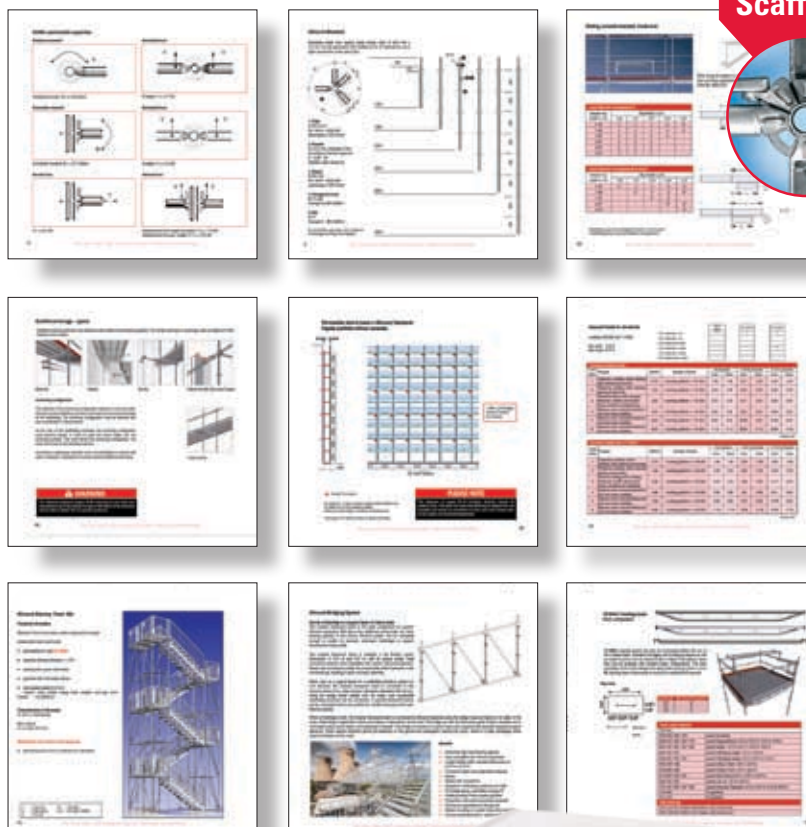
## New Layher guide brings it all together

“The most comprehensive publication of its type in the UK that we have ever produced.”

*Sean Pike, Managing Director, Layher Ltd. UK*

Sean Pike, Layher UK MD, is clear about the company's new 125 page Allround® Scaffolding UK Technical Guide. In a single document it provides instant access to key information on a range of Layher Allround® structures – from birdcages, façade scaffolds and bridging solutions to stairtowers, loading towers and ancillary items.

Dimensional details and key information – including component loading capacities and safe working load guidance – are clearly set out and represent a quick access point for everybody involved in



the design and technical aspects of Layher Allround® and associated systems.

“We believe this is an extremely beneficial publication for users, who can now request their own copy via our website,” adds Nick Geddes, Layher UK Technical Manager.



“The Royal Wedding project was an overall team effort including, not least, the back-up and support from Layher's UK office.”

**Andy Needham, MD**  
Media Structures Limited.

“We were delighted to have been given the opportunity to work closely with Media Structures Limited and congratulate Andy Needham and his team on the project.”

**Sean Pike, MD**  
Layher Ltd.

**Read the memorable story on pages 6 and 7**

## In this issue...



**2** A showcase of even greater possibilities – our Layher UK Open Day success



**8** Protect by name, protect by nature – Layher's smart, versatile screening system



**10** Creative and flexible – Layher Allround® rises with unique structure



## Open doors give a clear insight

The recent Layher Open Day held in Letchworth proved to be an excellent opportunity for visitors to learn about product developments, meet senior company personnel and hear a key presentation that addressed the important issue of safety.

"We were delighted that almost 120 scaffolding contractor guests were able to attend and meet with both our UK staff and senior management from our head office in Germany, including one of the principal shareholders, Georg Layher, Managing Director Dr Helmut Kreller and International Sales Manager, Margot Hoffman," comments Sean Pike, Layher UK's Managing Director.

"A number of new products were showcased with particular focus on the Allround® Bridging System, the Allround® TG60 Shoring Tower and our Lightweight Cassette Roof. Alongside, we were delighted that Simon Hughes, Director of Simian Risk, was able to give a detailed presentation on SG4:10 Preventing Falls when using Layher Allround® Scaffolding, which was very well received by all guests," adds Sean Pike.

The event was also marked by Layher UK's achievement of BSI accreditation ISO 9001:2008 – building on the accreditation held for many years by the company's head office. This notes a number of key achievements, not least the company's commitment to using material from quality assured sources. Georg Layher (pictured inset, right) was very happy to receive the certificate on behalf of the UK office from Vanessa Downs, BSI Regional Manager.

"It was a highly informative and enjoyable event and we are confident that the Open Day has enhanced our standing in the UK's scaffolding market," concludes Sean Pike.





## Road show rolls out in Germany

Eight venues welcomed the Layher Road Show recently in Germany where guests heard about new developments and received practical information. Product additions, application ideas and 'tips and tricks' were demonstrated alongside key speaker presentations – all designed to help users improve the efficiency of their Layher stockholding.



## 'Prestigious award' reflects customer vision

Layher is proud to have received the 'Baden-Württemberg Competence Prize for Innovation and Quality'. The award was proudly accepted by Dr Helmut Kreller, Managing Director – "This is an honour for the company and reflects the courage and vision of our customers who use our innovative products successfully in the market. This is a prestigious achievement of which we are very proud."



## Emphasis on skills



Layher Germany reports a key focus on the importance of apprenticeships and emphasises liaison with a potential future workforce via schools. From practical demonstrations to open days and factory tours, Layher is committed to helping young people decide their career paths and, of course, to introducing them to opportunities within the Layher organisation – clear evidence of the company's commitment to the future.

## New product brings easier handling

A 25% reduction in weight and an increase in effective head height with no loss in load bearing capacity – the Allround® U-transom, newly developed in Germany, dispenses with the conventional V-Reinforcement design. Ideal for high loadings, and matching the inserted Layher steel decks, customers will gain from easier handling, reduced transport volume and greater cost benefits.



*Old*

*New*



## Protection rolls ahead easily at Marylebone Station

A highly innovative Layher temporary roofing and crash deck design, installed by contractor PHD Modular Access Services Ltd., has helped main contractor Morgan Sindall Ltd. meet planned Network Rail completion dates during refurbishment at Marylebone Station. Progressively moved in tandem, the design helped the station – used extensively by Chiltern Railways – to remain open during the work.



“We used Layher’s Allround® system and decking panels, which offer excellent load-bearing capacity, to provide protection below and as support for a rolling birdcage giving access to the

roof,” says Gary Peacock, MD of PHD Modular Access Services Ltd. The entire roof structure required an average of just 40 minutes and four people to move each time.

“We believe that, to date, this PHD/Layher project is the largest span installation in Europe for our recently introduced Lightweight Cassette Roof system,” adds Layher UK MD Sean Pike.



## First class bridge installation saves time

The rail industry’s first use of the new Layher modular bridging system has helped ensure access for passengers was maintained at St Denys Station in Southampton during the refurbishment of an existing footbridge – demonstrating clear advantages over tube and fitting alternatives.

Scaffolding contractor Hadley Southern, working for main contractor Geoffrey Osborne Ltd. – appointed by Network Rail – says two weekend periods were allocated for the installation of the Layher bridge rather than three, which would have been needed with traditional material. In the event, only one weekend was required.



Clark Coffield, Hadley Southern’s Rail Division Contract Manager, also reports that the Protect panels used along the 31 metre total span produced a further remarkable reduction in installation time.

“The anticipated two days, which would have been required to fix a ply-board screening, was reduced to just 90 minutes,” he says.



# Handrail system provides key benefits

The Layher flat roof handrail system has played a major role in Bolton, providing some 400 metres of edge protection for BSL Systems and client MAC Roofing & Contracting Ltd., during National Grid roof refurbishment.

The design has proven effective and, importantly, as BSL Systems owner Joe Bridge explains, offers a key advantage for work being undertaken at the site –

“Any section of the Layher handrail installation can be opened up simply, enabling craneage access when required – markedly more effective than alternative methods,” he says.



# Allround® reaches every face

Layher Allround® scaffolding has played a key role in helping to make the most of a highly celebrated sculpture – the ‘Large Figure in a Shelter’ bronze sculpture, created by Henry Moore, installed at his house and studios in the mid 1980’s.

Maintenance needs called for a scaffold structure to provide access to each face of the 21 tonne work of art for cleaning – a requirement fully met by Connect Scaffolding and their use of Layher Allround®.

“The scaffold structure is sufficiently adaptable to provide ground level and elevated access to all internal and external surface areas,” says Connect Scaffolding Director Oliver Cave. “The system was the logical choice, particularly its versatile rosette connector design, which allows a range of angle and fixing points to be established.”

# Comprehensive commitment in the south

One of southern England’s most innovative scaffolding contractors has made a major commitment to Layher’s scaffolding systems. The move, by Modus Access UK Ltd., marks the contractor’s determination to provide a high quality and cost effective service and pays testimony to the versatility and suitability of the Layher range.

“Our research identified a need to provide cost effective methods of scaffolding and access that are an alternative to conventional tube and fitting,” comments Modus Access UK Ltd.’s MD, Simon Jeanes. “We therefore looked to identify a modular system that is quick and



versatile with loading capacities comparable to tube and fittings – with significant benefits in terms of simplicity, handling and speed. Additionally, we emphasised the need for inherent safety and for our chosen system to enable us to build to SG4:10.

“These are requirements that are fully addressed by Layher’s system scaffolding designs,” he concludes.





# Media Structures Limited uses Layher to help bring Royal Wedding splendour to the world

The billions of worldwide viewers of the Royal Wedding in London at the end of April may not have realised that Media Structures Limited, who were appointed to provide television viewing, studio and support facilities for the

world's media at key locations along the route, made extensive use of Layher equipment.

The combination of the Media Structures Limited design team and key benefits arising from the design of the Layher equipment came

together to enable a highly intensive build programme to be successfully completed at a range of locations around the capital.

Centre-piece was a dedicated media village in Green Park opposite Buckingham Palace where a three-storey structure was built using 158 tonnes of Layher Allround® scaffolding to provide up to 200 broadcast camera viewing points within 22 individual studios. The versatile rosette design helped the 70-metre long structure to follow a radius footprint, with Layher stairtowers also installed at key points, while Media Structures Limited also used the Layher system to create additional studio facilities to provide viewing points at ground level.

Along the route the scaffolding system was also used in up to 30 camera and commentary positions while, at Westminster Abbey itself, Media Structures Limited used Layher equipment to provide the multi-tiered media stand opposite the main entrance – which included the Layher Keder roof that utilised clear plastic Keder sheets in case of inclement weather. Additional camera positions on adjacent rooftops and within Westminster Abbey were also constructed.

“The Royal Wedding project was an overall team effort including, not least,





the back-up and support from Layher's UK office which helped to deliver a successful conclusion," comments Managing Director at Media Structures Limited, Andy Needham. "Less than a month was available from start of build to hand over so it was vital that we selected a scaffold system which was versatile, robust, enabled the optimum use of manpower and allowed the wide range of installations to be completed quickly."

His comments are echoed by Layher UK MD Sean Pike –

"This is an excellent example of the benefits of Layher systems designs, particularly when compared with conventional tube and fitting alternatives," he says.

"The latter, we believe, would have needed vastly more equipment, greater manpower and would have put extreme pressure on the time scale involved, while the neat appearance of Layher scaffolding also clearly made a major contribution, given the prestige of the event," he adds.

"We were delighted to have been given the opportunity to work closely with Media Structures Limited and congratulate Andy Needham and his team on the project. Although behind the scenes, we are proud to have been involved in the success of this truly global occasion."

# Helping to deliver prestigious refurbishment objectives



Clear access, excellent weather protection and high quality appearance are key scaffolding objectives met during roofing refurbishment at Melbourne Hall in Derbyshire by Layher Allround® scaffolding and Keder roof systems.

The highly prestigious two-phase project, has been undertaken by building contractor Alan Staley –

"It was vital to provide full working area access," says MD Alan Staley, "so the minimum number of components of the Layher system was important. Allround® scaffolding was built from ground level to support the



mono-pitched Keder roof structure which allowed natural light into the area while providing excellent weather protection."

The scaffolding installation – which made good use of the Layher 750 mm beam, scaffold bridges and stairtowers – was completed by Allround Scaffolding Services (Midlands) Ltd. Contracts Manager Joe Hassall, highlights the lightweight construction and uncomplicated, acceptable appearance as key factors.

"Alan Staley and Allround Scaffolding Services have achieved quality results that fully reflect the Royal heritage and standing of Melbourne Hall," adds Layher's UK MD Sean Pike.





## Excellent performance...and looking good!

The Layher Protect system, designed for use with both Allround® and SpeedyScaf® equipment, provides a well-proven means of containing noise and dust – with added aesthetic benefits.

Featuring a lightweight aluminium frame that is in-filled with either sheet steel or plastic webbing to create a complete 'skin' around a structure, both internal and external protection is achieved.

Additionally, sound absorbent matting can be fitted to minimise noise pollution.

A wide range of panel sizes is available to match precise installation dimensions resulting in fast, economical and versatile applications that can also enhance site appearance. Just take a look at the examples here . . .



## Site...out of sight...



Layher Protect panels have provided a visual barrier against construction works and have created the impression of a permanent structure at Gatwick Airport. Installed by Thyssen Krupp Palmers – appointed by Vinci Construction who are undertaking the construction work for Gatwick Airport Ltd. – the projects are centred on the internal departures hall and an external drop-off zone.

"Protect panels have been used to screen the construction of a new restaurant area and include bridging beams that create pedestrian arches," comments Chris Colyer, Contracts Manager at Thyssen Krupp Palmers.

The neat appearance of the Protect design has also provided surfaces for fixing sign boards, enabling it to blend further into the departures hall surroundings.

Outside, a 66m x 6m Protect screen has been created between two drop-off areas and, again, creates an appearance that is markedly removed from that of a building site.

The structures have been fitted to a support scaffold constructed using the Layher Allround® modular system to produce a result that fulfils both functional and appearance requirements.



## Connect uses Layher to project a great impression

A multi-level camera and projection tower, built for the television production company Endemol by Connect Events, has made the most of Layher Allround® and Protect systems.

Opposite the Natural History Museum, it provided a key facility for a major televised lottery draw shortly before last Christmas. Speed of erection and stability were important benefits that helped the

production crew install equipment on schedule – not least for a projected image of the live draw onto the front façade of the museum.

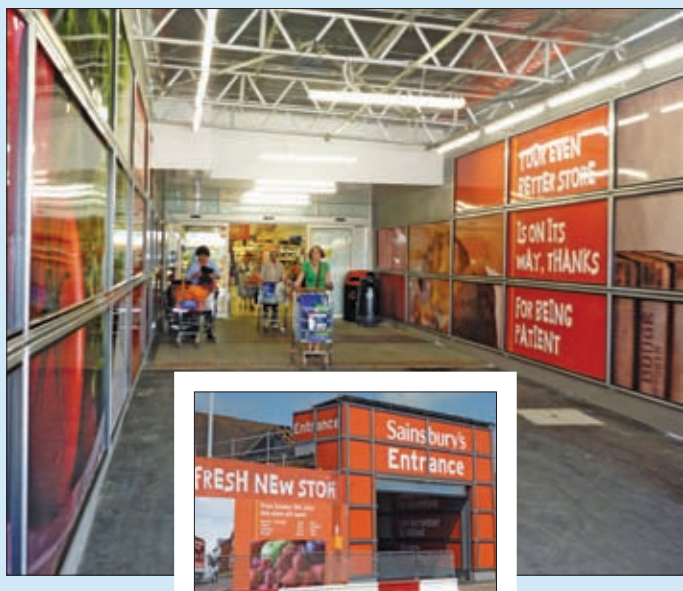
“An integral staircase provided full access whilst the Layher Protect system added weather protection,” says Connect Events’ Director Oliver Cave. “The results were arguably just as impressive as the creation of 25 new millionaires on the night!”



## Tidy and effective – supermarket refurb gains from Protect

Layher Protect panels have proven to be the ideal means of providing temporary pedestrian walkway access and protection during recent development projects for a major supermarket chain – installed by Connect Scaffolding.

At Ashford in Kent, for example, Connect points to the system’s uniform design and ease of connection to Layher Allround® scaffolding as key benefits, with the added advantage of a highly effective finish for the application of advertising graphics.



## Connect connects with Protect panels

A combination of Layher Allround® scaffolding, Protect panels and a Layher steel deck canopy has created a protected walkway that links completed buildings with construction areas to provide safe access for residents in Greenwich.

Connect Scaffolding installed the facility for Telford Homes at its Creekside development – with the innovative covering of the Protect panels with white vinyl to reflect light into the covered space – an added feature.

“The residential and commercial development forms part of a new cultural quarter and is designed to stand out in its location – not least as a result of floor to ceiling glazing,” comments Connect Scaffolding’s MD, Oliver Cave. “We believe the clear and tidy appearance of the walkway fulfils the brief by being both aesthetic and functional.”





# Layher staircase systems help unique structure to rise

One of the most remarkable and unusual structures to be built in the UK for many years is now taking shape on the Olympic Park in London, and is gaining from the use of Layher staintowers to provide multi-personnel access during its construction. The ArcelorMittal Orbit Tower, designed by Anish Kapoor and Cecil Balmond, is being constructed by Team Orbit who, in turn, have appointed GBG Construction to erect the access scaffold. At its heart, more than 40 x 2m high aluminium stair flights, supplied by hire and sales specialists Rotamead, form a staircase that rises to almost 85 metres of the structure's overall 115 metre height.

Andy Collins is Director of GBG Construction (founded by the late Gerry Gleeson) and explains the build process and thinking behind the use of the Layher system and highlights the innovative method of construction used –

"We are assembling the staintower sections inside one half of the steel-work which will ultimately house the lifts for The Orbit structure," he says. "A series of eight steel frames, the majority built to 12 metres in height, are assembled at ground level and contain up to six staircase lifts within one of the voids that will ultimately house one of the lift carriages. Each structure – steel frame and staircases combined – is then craned into position to be progressively fixed to the section below. This method has helped us raise workforce access as the build proceeds and, importantly, the 700 mm staircase width has permitted time-saving multiple personnel usage throughout."

The initial 10 metres of the framework and staircase combination was built from ground level with the first craned section – which, at just over four metres in height provided two lifts – then attached. Sections are then being added progressively to keep pace with the construction of The Orbit itself – much of the construction work being undertaken via workforce access from an adjacent cherry-picker.

"The cherry-picker is able to operate from ground level for the first 40 metres of construction, but thereafter is itself being craned onto a temporary platform built on top of the two lift shaft structures," adds Andy Collins. "This is where the installation of the Layher stair system becomes key as it elevates the assembly teams to the same level with personnel access through the platform from the top of the stair system. This clearly helps to ensure that the project can proceed smoothly and efficiently throughout the build programme." Some 72 weeks have been scheduled for construction of The Orbit with completion targeted for March 2012.

Before craning, the staintower lifts are fixed to each frame using Layher ladder beams, which are then removed as each section is bolted into position and replaced by ties to the lift shaft structure itself. GBG Construction highlights a comparison between using the Layher system, which is centred on a modular design, and the alternative option of using tube and fittings throughout. The latter, Andy Collins says, would have used significantly more material, greater man-power and, perhaps crucially, markedly more construction time.

"There is no doubt that The ArcelorMittal Orbit Tower by Anish Kapoor and Cecil Balmond will become one of the most recognisable and iconic structures of its type ever seen and is



Detail of the Layher Allround® equipment with the London 2012 stadium in the background

set to attract visitors well beyond the major sporting events of summer 2012," comments Layher's UK Managing Director Sean Pike. "We believe that the ease of construction, lightweight design and inherent safety of our staintower systems, which have been supplied for this project by one of the South East's largest hire and sales companies, Rotamead – a major stockist of our range of staintowers and access equipment – have jointly made a major contribution to meeting the very specific requirements of this important project.

"We are delighted to have worked closely with Rotamead, GBG Construction and main contractor Team Orbit to help meet very clear cut operational objectives and deadlines to provide the required access throughout the build period – simply, effectively and safely," he concludes.





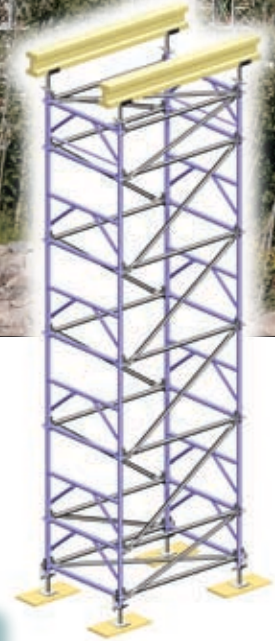
# Shoring system enhances efficiency and saves cost

Proven throughout Europe, the Layher Allround® TG60 Shoring Tower system offers 30% greater efficiency than comparable solutions.

"The SG4:10 compliant design interfaces with Allround® modular scaffolding and requires fewer bays and thus less material than tube and fitting alternatives. This enables scaffold contractors to offer a more effective service and to become active on site earlier than perhaps would otherwise be the case," says Sean Pike, Layher's UK MD.



Bay sizes can be specified in a range of dimensions while in-built features such as 'Fall-Safe' side protection, non-slip decks and lightweight construction, all enhance the suitability of the system for a wide range of locations.



## Allround® Bridging System

Recently introduced, the new Allround® bridging system has already been widely welcomed in the industry. Ideal as a footbridge or support girder for heavy loads, spans of up to 30 metres can be achieved with options such as event decking, Protect panels, child-proof guard rails and temporary roof sections readily fitted to match every installation.



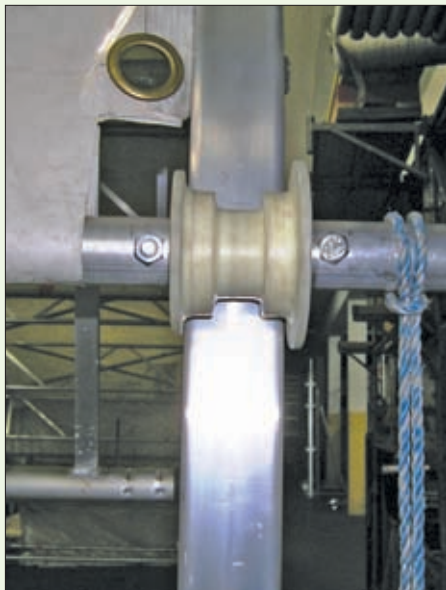
## Allround® STAR System

The simplicity of the Layher Allround® STAR System, which comprises just two components that interface directly with the Allround® rosette design, is making further inroads into the industry – particularly where façade scaffolds are required. Any standard Layher deck can be used with system, which benefits from high visibility closing brackets to provide an 'at a glance' safety check.





## Stop Press... Keder Sheet Feeder



## A relaxing weekend awaits...

Sean Elliott, Commercial Director at Fastfix Scaffolding Ltd. wins the competition draw following the recent Layher Open Day and collects his prize from Layher's UK MD, Sean Pike – with our wishes that he and his guest enjoy their weekend stay and spa treatment at the Letchworth Hall Hotel.

Keder roof installation is now enhanced with nylon castors mounted in pairs on a 2.8 m tubing length, fed through the pulling sockets of the Keder sheet where it is fixed into the final position.

"This is a significant step forward for an important product," says Layher's UK MD Sean Pike, "with a further development – the Keder Roof 'Xtra', capable of bigger spans – set to be added soon."



## Make us laugh and you could win!

Layher UK Sales Managers, Clive Rowe and Matt Sherwin, take a little time out to enjoy everything that a recent exhibition had to offer. All we want to know is what Matt (right) has just said that has put a smile on Clive's face.

Send your answers in no more than 15 words to [info@layher.co.uk](mailto:info@layher.co.uk) and the one that makes us laugh the most will win a bag of Layher goodies including a genuine Swiss army knife, sweatshirt and key-ring torch.

(Polite answers only, please!)



## The Layher Choice

- **ALLROUND® SCAFFOLDING**  
Maximised installation versatility centred on Layher's acclaimed 'rosette' design.
- **EVENT SYSTEM**  
Dedicated equipment designed to be expandable and adaptable – meeting a vast number of concert and sporting event staging, stand and platform requirements.
- **PROTECTIVE SYSTEMS**  
From 'Protect' containment panels to a choice of temporary roofing systems – all designed to help maximise efficiency and improve the building environment.

- **SPEEDYSCAF®**  
Simple, manual erection using just five basic components to create a strong, stable access system.
- **FALSEWORK**  
With a few additional components, Allround® can easily be converted into a falsework system offering back-propping, crash-deck and load support solutions.
- **ROLLING TOWERS**  
Fast to erect, easy to reposition, safe and with a choice of decking sizes – the optimum answer to mobile access.

- **LADDERS AND STAIRTOWERS**  
Direct stairtower connection to scaffold design provides safe, durable access for multiple personnel use at any height – together with a choice of ladder designs that all offer durability, stiffness, safety and stability.
- **ACCESSORIES**  
From steel or aluminium unit beams, scaffold tubes, couplers and castors to hoists, nets, wall anchors and hardware, the choice of optional accessories from Layher is innovative and extensive – to maximise the success and effectiveness of every installation.

Layher Ltd., Works Road, Letchworth, Hertfordshire SG6 1WL  
**Tel** 01462 475 100 **Fax** 01462 475 101 **E-mail** [info@layher.co.uk](mailto:info@layher.co.uk) [www.layher.co.uk](http://www.layher.co.uk)  
 Layher Scotland, Letham Road, Houstoun Industrial Estate, Livingston, West Lothian EH54 5BY  
**Tel** 01506 440220 **Fax** 01506 440110 **E-mail** [info@layher.co.uk](mailto:info@layher.co.uk) [www.layher.co.uk](http://www.layher.co.uk)

**Layher®** 

More Possibilities. The Scaffolding System.