



From expansion to training – building on a successful 2006

The success that the Layher group has enjoyed throughout 2006 has not only given grounds for optimism as the new year dawns, but has already formed the basis for exciting investment projects now well under way. This positive outlook is also reflected in the UK where Layher product specific training has received a boost with CISRS endorsement.



Group investment in new equipment, production facilities and stock-holding capability all echo a commitment to projects of all sizes – from the small to the large and even the famous. Allround® scaffolding, for example, was seen at the Winter Olympic Games in Turin and the highly successful Football World Cup hosted, of course, in Germany.

A lift for training

CISRS endorsement for Layher product specific training also marks a major step forward in the UK – “Current CISRS card holders who have carried out a two or three day product training course with Layher Allround® or SpeedyScaf® systems can apply to have their cards updated,” says UK Managing Director, Sean Pike.

“The simple application process is undertaken by our training provider ‘Inscalf’ who complete all the necessary details from existing records and carry out appropriate checks such as recent health & safety testing,” he adds. The company is also actively assisting CISRS to develop training for ‘Unqualified Experienced Workers’ and ‘New Entrants’.

“We fully believe that the NASC, CISRS and Layher’s willingness to work together to find workable systems training methods represents an important safety benefit that the whole of the scaffolding industry will recognise,” adds Sean Pike. “2007 is already looking like a good year,” he concludes.

Customers are gaining from Layher group investment, including...

- A fully automated production line for steel decks
- Two new welding facilities for Allround® ledgers and standards – with ten more to follow over the next two years
- Development plans for a second zinc coating shop
- Enhanced stock-holding to meet predicted demand over the forthcoming months

In this issue...



• *Helping to make a little bit of history in Farnborough and keeping things clean and tidy in Hull City Centre page 2*



• *Morrison's Headquarters gains from Allround® scaffolding whilst things are kept quiet in Whitechapel page 3*



• *New products include patented Light Weight Roof protection and Advance Guard Rail system page 4*

- ALLROUND® SCAFFOLDING
- PROTECTIVE SYSTEMS
- ROLLING TOWERS
- SPEEDYSCAF®
- FALSEWORK
- EVENT SYSTEM
- LADDERS AND STAIRTOWERS
- ACCESSORIES

The Layher Head Office and factory in Germany





History takes off with no ties

The tying-in restrictions associated with a major Grade I listed structure have been overcome by the use of Layher Allround® scaffolding and temporary roofing systems used in conjunction with extensive kentledge.

The work at Farnborough Airfield and Science Heritage site, which saw the birthplace of the RAF before becoming the home for comprehensive wind tunnel testing, is being transformed into a high profile residential, office and public venue facility. Installed by contractor Archway Services plc, the scaffold has met the requirements of owners Slough Estates and other relevant parties including English Heritage and the local planning authority, Rushmoor Council.

“The tying-in restrictions prompted us to design a structure that benefits from an extensive use of kentledge located at six metre intervals around ‘Building Q121’,” explains Mel Archer, Managing Director of Archway Services plc. “It is also positioned some 14 metres from the ground on the scaffold itself to secure the temporary roofing structure in position. In total some 2,000 tonnes of kentledge has been used in this way,” he says. An internal load-bearing birdcage structure has also been created to provide back-propping and support through the roof area.

“The strong, light weight design of the Layher system clearly helped significantly towards achieving the objectives at site,” adds Mel Archer, whose company required less than three weeks per section using just 12 operatives for the installation.

The exposed location of the site adjacent to Farnborough Airfield and even the potential vortexing from adjacent jet aircraft movement, have all been accommodated by the structure. The result has contributed to a facility which is now meeting the needs of the 21st century while still paying full testimony to its celebrated history.



Comprehensive scaffolding at the Grade I structure in Farnborough despite tying-in restrictions (above)

The internal load bearing birdcage structure that provides back-propping (above right)

Part of the framework for the temporary roofing installation (right)



Clean and tidy

An effective barrier and a clean, aesthetic appearance have both been achieved during the construction of a new block of apartments for Barratt Homes in Hull City Centre through the use of the Layher Protect system. Installed by Burflex Scaffolding, the entire site perimeter, adjacent to a pedestrian and road thoroughfare, has been clad with Protect with the design also enclosing a loading tower to maximise safety and protection for the public in this busy central location.

“The structure not only offered significant protection benefits but also, usefully, provided a clear backdrop for fixing of logos and name identification – including the site sales office telephone number,” comments Layher’s UK Managing Director, Sean Pike.

The rectangular, aluminium frames, which feature sheet steel infills, were connected to the Layher Allround® support scaffolding in a design that also included an in-built archway to provide road access on to the site.



The Layher Protect system provides an effective barrier and an attractive finish (above and below)



Access to new headquarters

The new Morrison's headquarters in Bradford is a state of the art facility that has benefited from Layher's Allround® system and the installation skills of Acorn Scaffolding (Yorkshire) Ltd. – for main contractors, Shepherd Construction Ltd.

A birdcage scaffold was constructed to gain access to the glazing area of the main building's central glass-roofed atrium which has an apex of some 17.5 metres above ground level. The scaffold followed a stepped profile to match the two-sided roof pitch and proved to be easy to handle, requiring less time to install than conventional scaffolding alternatives.

The design also accommodated stone-clad steel pillars along all faces of the building, with Layher's console brackets used to fix ply-board areas.

Despite severe restrictions on tying-in to the structure, overcome by buttresses and kentledge, the sequence of specialist work began on time and proceeded as required.



The new Morrison's Headquarters in Bradford during construction that gains from Layher's Allround® system



A view of the internal atrium during building work which has an apex of some 17.5 metres



Royal London keeps quiet with Layher Protect

The need to minimise disruption from major demolition and building work just feet away from specialist hospital units has been met at the Royal London Hospital in Whitechapel through the use of Layher's Protect system. TRAD Scaffolding has completed the largest ever UK installation of the Protect acoustic screening, which has dramatically reduced noise and dust for the adjacent hospital areas – including children's wards, a coronary care unit and maternity facilities.

The programme on the Whitechapel site is seeing 14 buildings demolished to make way for a new landmark medical facility. The installation has been undertaken by TRAD scaffolding for Skanska, whose Project Director, Mervyn Lowe, highlights the importance of the installation –

“It was extremely important to find an effective means of combating the noise and dust inevitably produced by a project of this type – and one which could be moved as the project proceeds.

“Following our decision to purchase the Layher Protect acoustic screening system,” he continues, “TRAD have not only completed a design that follows the many contours of the building but one which also creates a highly effective sound and dust barrier with an aesthetically acceptable appearance.”

Jane McLean, Head of Nursing for Children's Services at the Royal London Hospital, sums up the benefits provided by the Protect system and the installation design –

“The noise and dust were our two biggest concerns but, to date, we have remained in full operation of all services – it has felt like we have been wrapped in cotton wool.”



The Royal London Hospital in Whitechapel (top and above) gains significantly from the use of the Layher Protect acoustic screening system

“Like being wrapped in cotton wool”

WHATEVER YOUR EQUIPMENT NEEDS ...

Temporary roofing has never been easier

A major step forward in the construction of temporary roofing systems is now available with the new 'Patented Light Weight Cassette Roof' from Layher. The system features a roof covering of aluminium/PVC cassettes that can be located on non-system aluminium lattice beams to provide excellent temporary cover in a wide range of application environments.

Significantly, it can be erected by hand where crane facilities are not available – notably city centre locations.

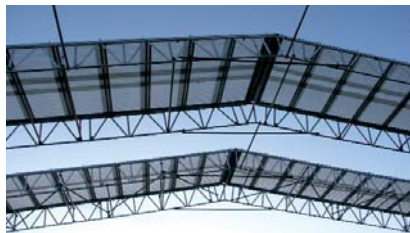
Its design and appearance allows it to integrate perfectly on all sites while its translucent cassettes not only provide access for natural light but can also be stacked easily without the use of pallets.

"Simple mounting onto all 450/750 aluminium lattice beams opens up the new roof for use with a vast range of scaffold designs and systems," comments UK Managing Director, Sean Pike. "Rapid assembly is achieved with the proven Layher snap-on claw design whilst components also offer the option for multiple use – typified by the U profile and shell clamps which can be used for building birdcage scaffolds."



The new, patented light weight cassette roof system provides effective protection and is simple and easy to handle

The company believes that the advantages in terms of speed and simplicity offered by the new patented light weight cassette roof system will bring the benefits of weather protection – including more reliable project scheduling – to a wider range of construction sites than ever before.



Keeping ahead of construction

Safe working procedures during the erection of a scaffold structure are now enhanced by the introduction of the Layher Advance Guard Rail System®. The concept provides scaffolding erectors with a pre-fixed guard rail that is simply located progressively at the relevant working height – virtually eliminating the need for harness use.

A telescopic rail, extending up to 3.07 metres, is raised using two vertical sections that connect to the standards of an existing bay. This provides automatic protection for the construction of the next lift with the guard rail simply disconnected and relocated as the structure proceeds. A combination of bay lengths can be protected by simply bridging across one standard of the scaffold.

"The number of guard rail posts required is minimised, reducing material costs on site," comments Layher UK's Managing Director, Sean Pike. "Additionally, the light weight design means the system is useable by one scaffold erector using no special tools."

Complying with NASC and HSE requirements, the concept is cross-compatible for use with Layher's Allround® and SpeedyScaf® modular systems – "we believe the development offers benefits which will be recognised by everybody involved in the industry," concludes Sean Pike.



The new system is simply located to provide enhanced safety as a scaffold structure proceeds

... WE'VE GOT IT COVERED!

To take full advantage of our range, our experience, our commitment – contact us now

Layher Ltd., Works Road, Letchworth, Hertfordshire SG6 1WL

Tel 01462 475 100 Fax 01462 475 101 E-mail info@layher.com www.layher.co.uk [More Possibilities](#). The Scaffolding System.

The Layher Choice

- ALLROUND® SCAFFOLDING**
Maximised installation versatility centred on Layher's acclaimed 'rosette' design.
- PROTECTIVE SYSTEMS**
From 'Protect' containment panels to a choice of temporary roofing systems – all designed to help maximise efficiency and improve the building environment.
- ROLLING TOWERS**
Fast to erect, easy to reposition, safe and with a choice of decking sizes – the optimum answer to mobile access.
- SPEEDYSCAF®**
Simple, manual erection using just five basic components to create a strong, stable access system.
- FALSEWORK**
With a few additional components, Allround® can easily be converted into a falsework system offering back-propping, crash-deck and load support solutions.
- EVENT SYSTEM**
Dedicated equipment designed to be expandable and adaptable – meeting a vast number of concert and sporting event staging, stand and platform requirements.
- LADDERS AND STAIRTOWERS**
Direct stairtower connection to scaffold design provides safe, durable access for multiple personnel use at any height – together with a choice of ladder designs that all offer durability, stiffness, safety and stability.
- ACCESSORIES**
From steel or aluminium unit beams, scaffold tubes, couplers and castors to hoists, nets, wall anchors and hardware, the choice of optional accessories from Layher is innovative and extensive – to maximise the success and effectiveness of every installation.

Layher®